



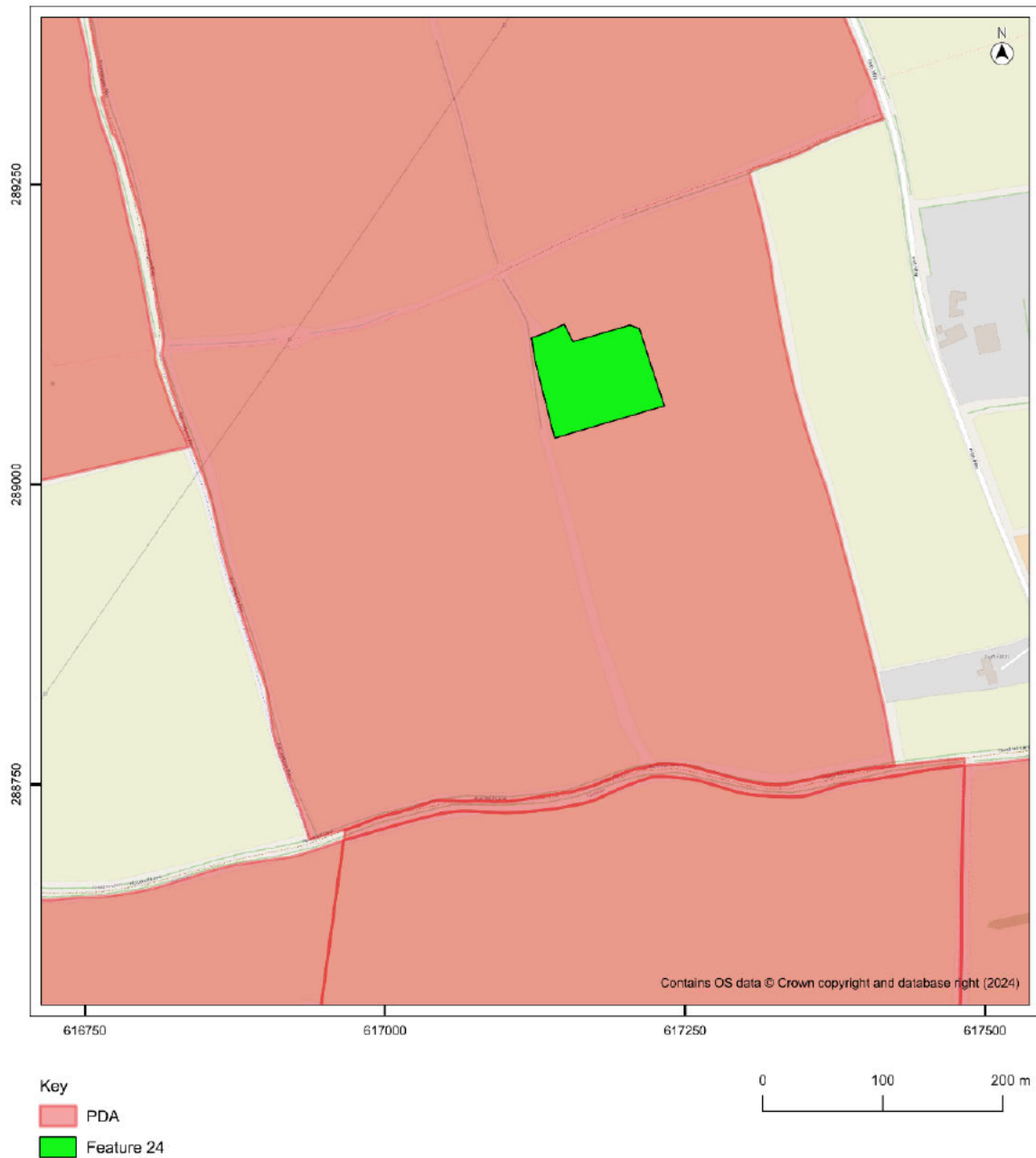
Illus 49. Feature HA 23 as mapped by this AIM project overlain onto 1:2500 OS mapping



Illus 50. Feature HA 24 as shown on aerial photographs held by Google Earth Pro dated December 1999



Illus 51. Feature HA 24 as mapped by this AIM project overlain onto 2nd edition 1:10560 OS mapping



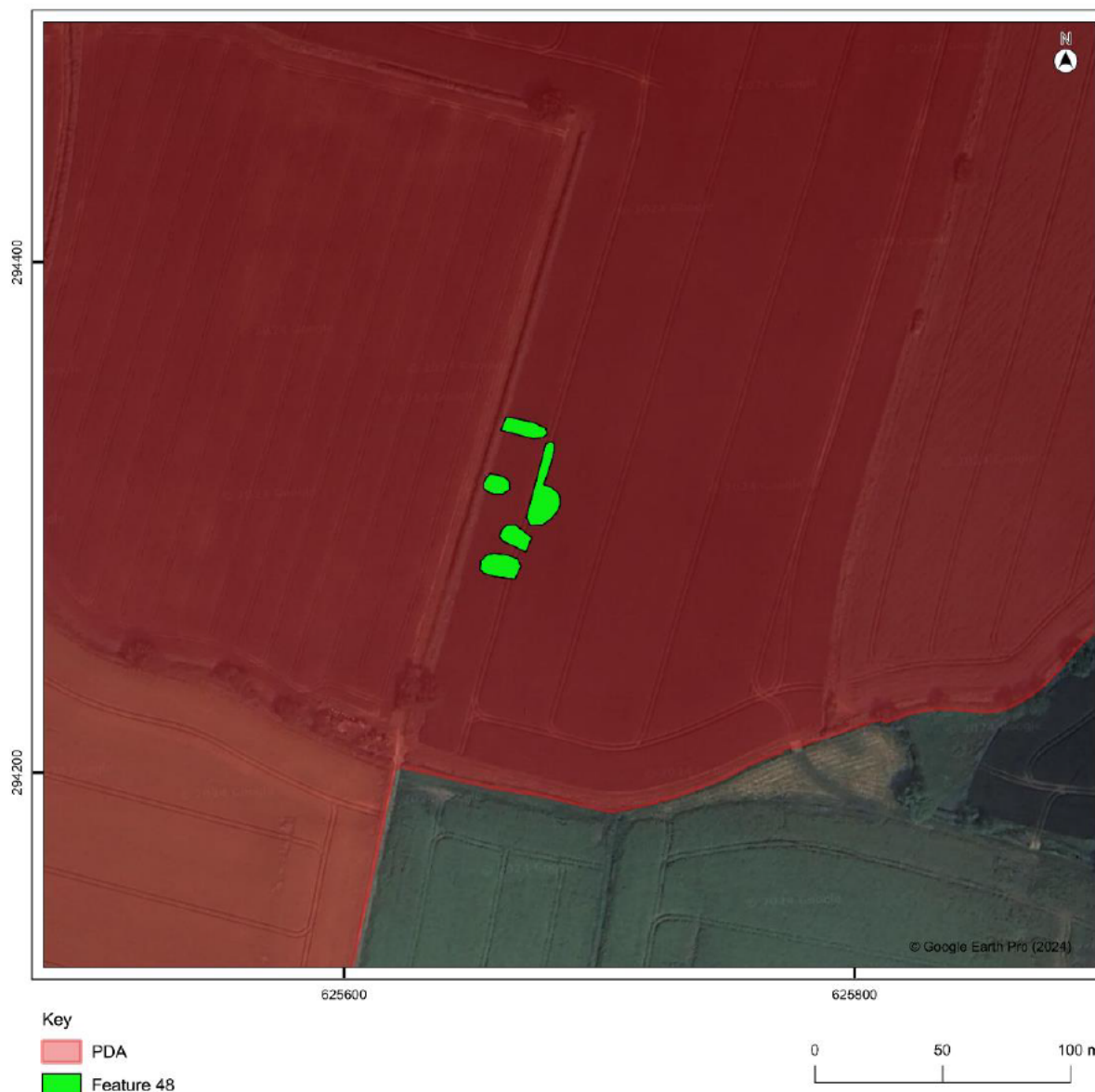
Illus 52. Feature HA 24 as mapped by this AIM project overlain onto 1:2500 OS mapping



Illus 53. Feature HA 48 as shown on aerial photographs held in the Historic England Archives and Norfolk Air Photo Service (ref. TM2295/93-358/58)



Illus 54. Feature HA 48 as mapped by this AIM project overlain onto 2nd edition 1:10560 OS mapping



Illus 55. Feature HA 48 as mapped by this AIM project overlain onto Google Earth Pro imagery

Field systems and enclosures

- 5.4.15. Intersecting north – south and east – west linear features, HA 7, are shown in Area 18 on aerial photograph RAF/58/5942/32 only, dated 3rd October 1963, which is held in the Historic England Archive (Illus. 56 and 57). The north – south linear has a length of around 46m whilst the east – west linear has a length of around 120m, and both are between 2.5m and 4m in width. HA 7 respects the surrounding post-medieval field system. No corresponding anomalies were identified on geophysical survey of the PDA and this feature is not recorded on the HER. HA 7 may be the remains of abandoned unmapped medieval or post-medieval field boundaries but may equally represent a now-abandoned post-medieval or modern trackway connecting Wood Farmhouse with Grove Farmhouse.
- 5.4.16. In Area 138, cropmarks of a square enclosure which presents as very darkly coloured boundary ditches and a dark coloured centre within a lighter coloured field, HA 29, appears on all consulted sources except LiDAR (Illus. 58 - 60). It was not identified on the geophysical survey of the PDA. HA 29 has an internal width of c. 51.5m x c. 5-m, ditches of c. 2m width. The boundary ditches of HA 29 correspond with an enclosure shown historic mapping. It is believed that the dark internal area of HA 29 could reflect the site of an unmapped medieval or post-medieval building, although this is by no means certain. HA 29 is not currently recorded on the HER.
- 5.4.17. The cropmarks of two interconnected rectilinear enclosures in south of field respecting mapped post-medieval field boundaries, HA 44, are shown on all aerial photographic sources in Area 199 (Illus. 64 and 65).

The ditches of these enclosures are c. 2m in width, with the western enclosure having an internal width of c. 44.5m and the eastern enclosure having an internal width of c. 97m. HA 44 is not shown on historic mapping or recorded on the HER. HA 44 is thought most likely to relate to unmapped medieval – post-medieval agricultural enclosures.

- 5.4.18. Two east – west linear features not corresponding to field boundaries shown on historic mapping, HA45, are visible on aerial photograph RAF/106G/UK/930/3084, dated 16th October 1945, in Area 201 (Illus. 64 and 65). On this photograph, they appear to take the form of earthworks rather than cropmarks or soilmarks. The linears have widths of c. 3m – 3.5m and the northern linear is c. 108m in length whilst the southern linear is c. 140m in length. LiDAR imagery does not record any surviving earthworks relating to HA 45, and it is probable that these were destroyed during the construction of the pond which now lies within the northern half of Area 201. HA 45 is not currently recorded on the HER.

Post-medieval plantations, field boundaries and ponds corresponding to historic mapping

- 5.4.19. Google Earth Pro aerial photographs show the cropmarks of a truncated oval feature and rectilinear feature, HA 10, in Area 28 (Illus. 61 - 63). The feature was not identified on any other consulted source. The ditches defining the different elements of this feature measure c. 2m in width. The total internal area of the truncated oval is c.41m x 30m whilst the total internal area of the rectilinear feature is c.216m x 45m. HA 10 was also identified on the geophysical survey of the PDA but is not currently recorded on the HER. HA 10 corresponds with the borders of two areas of vegetation as shown on 1st - 2nd edition OS mapping and named as 'Long Plantation'. HA 10 therefore clearly relates to this mapped plantation.
- 5.4.20. Linear and circular or subcircular cropmarks and soilmarks corresponding to mapped post-medieval field boundaries and ponds are present in 178 Areas of the PDA. Their locations are summarised in the gazetteer presented in the appendix.



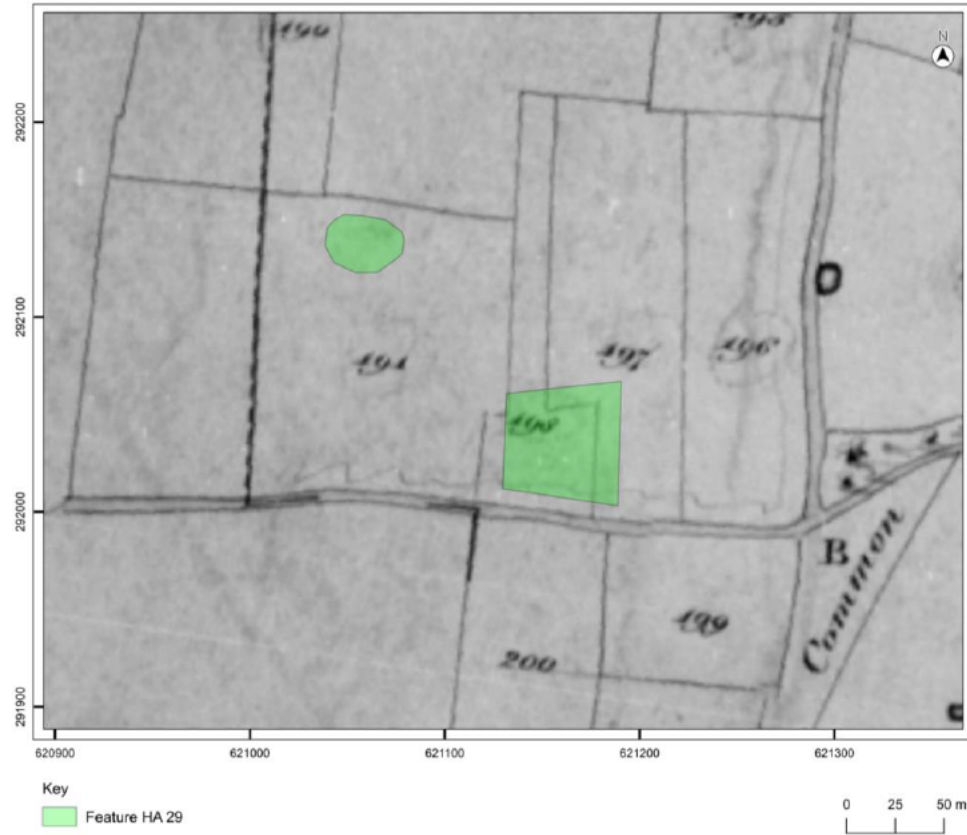
Illus 56. Feature HA 7 as shown on aerial photographs held in the Historic England Archives (ref. RAF/58/5942/32)



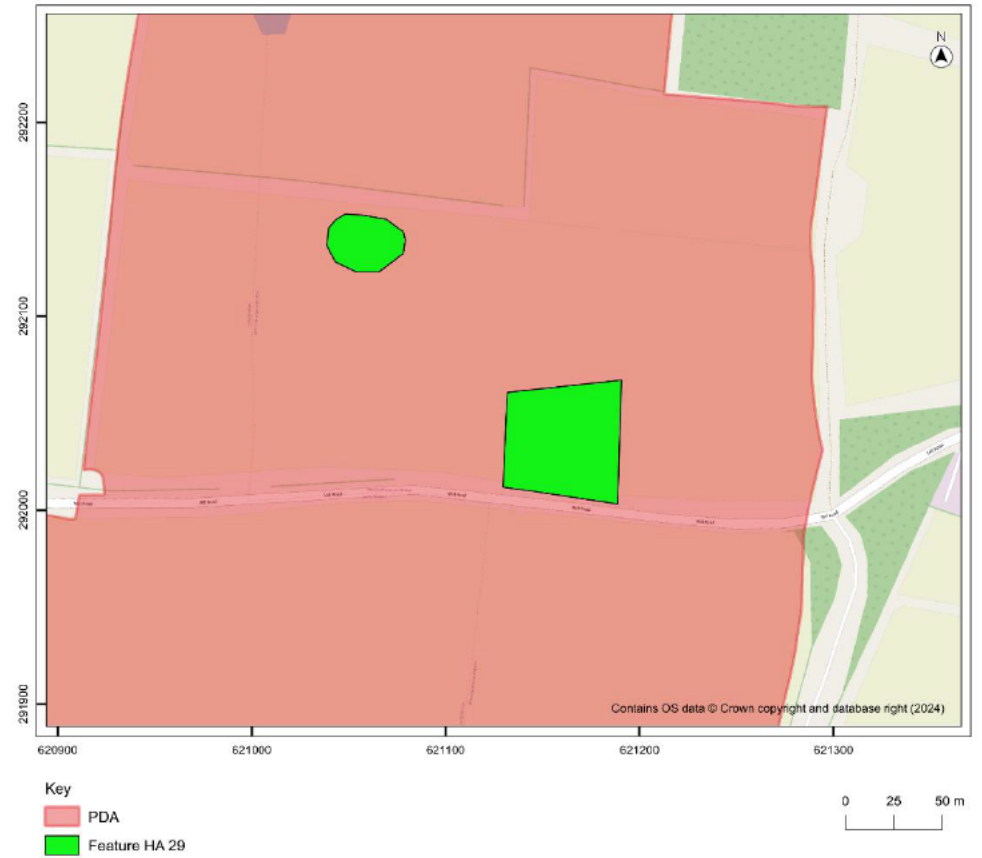
Illus 57. Feature HA 7 as mapped by this AIM project overlain onto Google Earth Pro imagery



Illus 58. Feature HA 29 as shown on aerial photographs held by the Norfolk Air Photo Service (ref. BKS/1672)



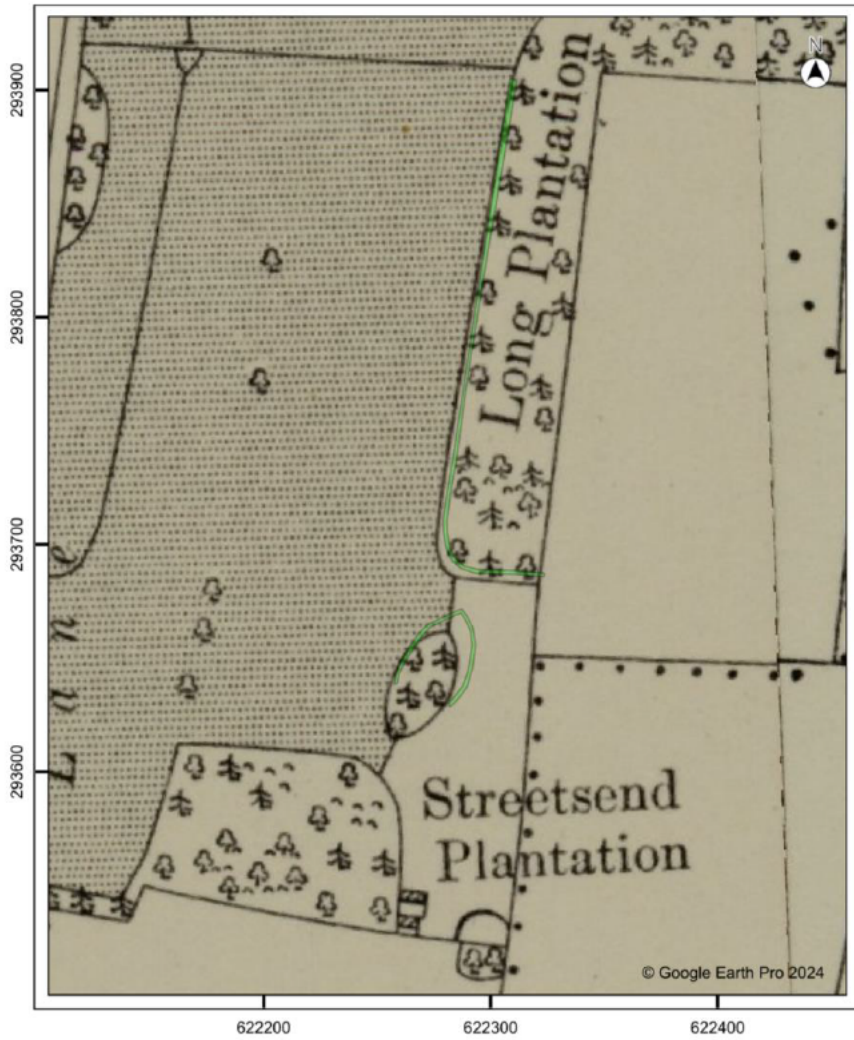
Illus 59. Feature HA 29 overlain onto the tithe map for Morningthorpe



Illus 60. Feature HA 29 as mapped by this AIM project overlain onto 1:2500 OS mapping



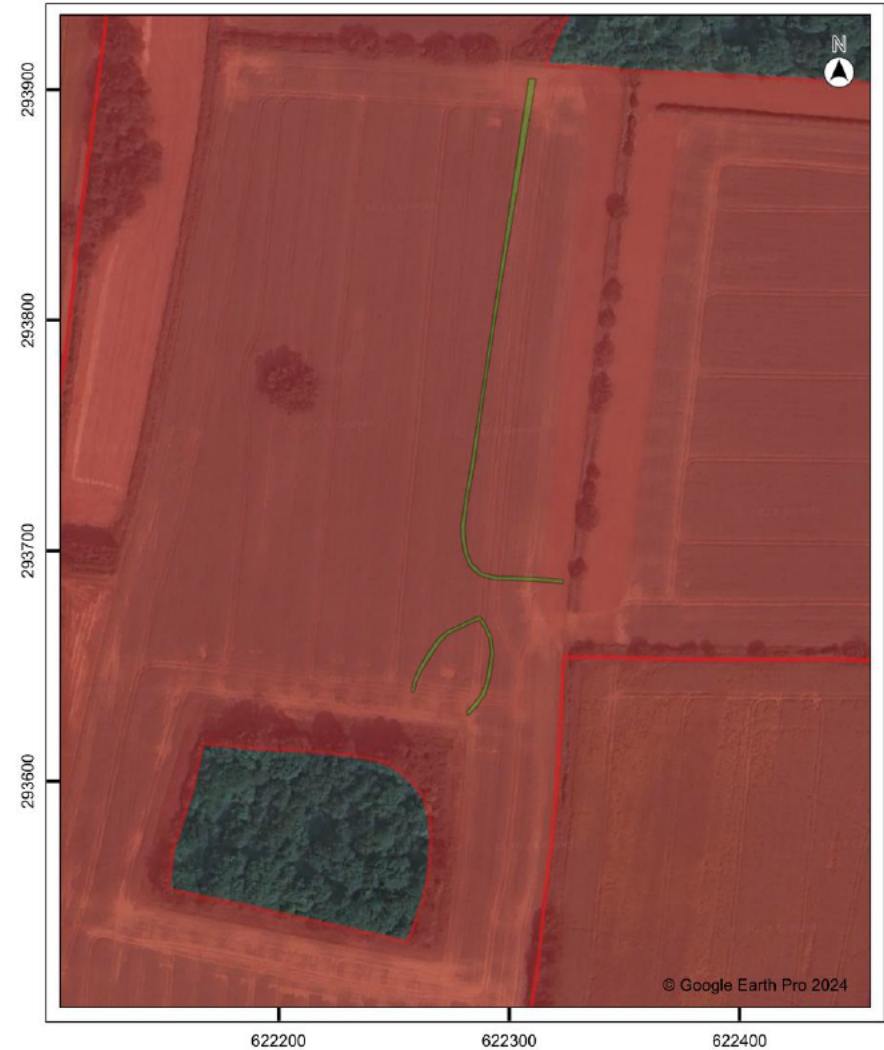
Illus 61. Feature HA 10 as shown on aerial photographs held by Google Earth Pro, dated May 2011



Key
Feature HA 10

0 25 50 m

Illus 62. Feature HA 10 overlain onto 2nd edition 1:10560 OS mapping



Key
PDA
Feature HA 10

0 25 50 m

Illus 63. Feature HA 10 as mapped by this AIM project overlain onto Google Earth Pro imagery



Illus 64. Features HA 44 and HA 45 as shown on aerial photographs held in the Historic England Archive and by the Norfolk Air Photo Service (ref. RAF/106G/UK/930/3084)



Illus 65. Features HA 44 and HA 45 as mapped by this AIM project overlain onto georectified Google Earth Pro imagery

Probable or possible medieval or post-medieval plantations, field boundaries, ponds and extraction pits

- 5.4.21. LiDAR imagery of Area 155 shows earthworks of amorphous anomalies, HA 32, in Area 155 (Illus. 66 - 68). LiDAR data records the earthworks as a series of slight mounds and depressions. HA 32 covers a total area of c.133m x 100m and lies within an area of planting and to immediate south of a brick works as shown on 1st - 2nd OS mapping. Due to HA 32's location, it is believed most likely to relate to the post-medieval planting but may be related to the post-medieval brickworks.



Illus 66. Unannotated LiDAR DTM imagery at 1m resolution with hillshade and colour ramp showing HA 32



Illus 67. Feature HA 32 as shown onto 2nd edition 1:10560 OS mapping



Illus 68. Feature HA 32 as shown on Google Earth Pro imagery

- 5.4.22. Circular cropmarks and/or soilmarks thought most likely to related to unmapped medieval or post-medieval extraction pits or ponds, on the basis of their location near field edges and/or their size, were identified within Areas 17 (HA6), 27 (HA9), 30 (HA11), 36 (HA 12), 58 (HA 19), 138 (HA 29), 158 (HA 34), 159 (HA 35), 160 (HA 36), 162 (HA 37), 163 (HA 38), 173 (HA 41), 187 (HA 42), 209 (HA 47), 225 (HA 49), 228 (HA 50b), 237 (HA 52), 241 (HA 54b), 246 (HA 57), 248 (HA 59) and 249 (HA 60).

5.5. Modern military infrastructure

- 5.5.1. Aerial photographs held in the Historic England Archive and by the Norfolk Air Photo Service provide clear images of HER MNF21992 - Hardwick WW2 USAAF airfield (HA 17; Illus. 69 - 71). HA 17 extends into Areas 53, 56, 57 and 251 of the PDA and has a total footprint of c.1.9km x 1.1km. HA 17 consists of runways, dispersal pads, barracks, access tracks and associated infrastructure such as storerooms and other standing structures. Earthworks relating to HA 17 are present on LiDAR imagery in the woodland between Areas 53, 56, 57 and 251 of the PDA.
- 5.5.2. The existing AIM project data for Norfolk maps most of HER MNF10466, the World War Two airfield at Seething (HA 21), including those parts which extend into Areas 79 – 82 of the PDA. This AIM project has mapped the remaining westerly area of HA 21 (Illus. 72 and 72). Whilst much of this newly mapped area lies outside of the PDA, the westernmost barracks and their access roads extend into Area 73. These were also identified as a

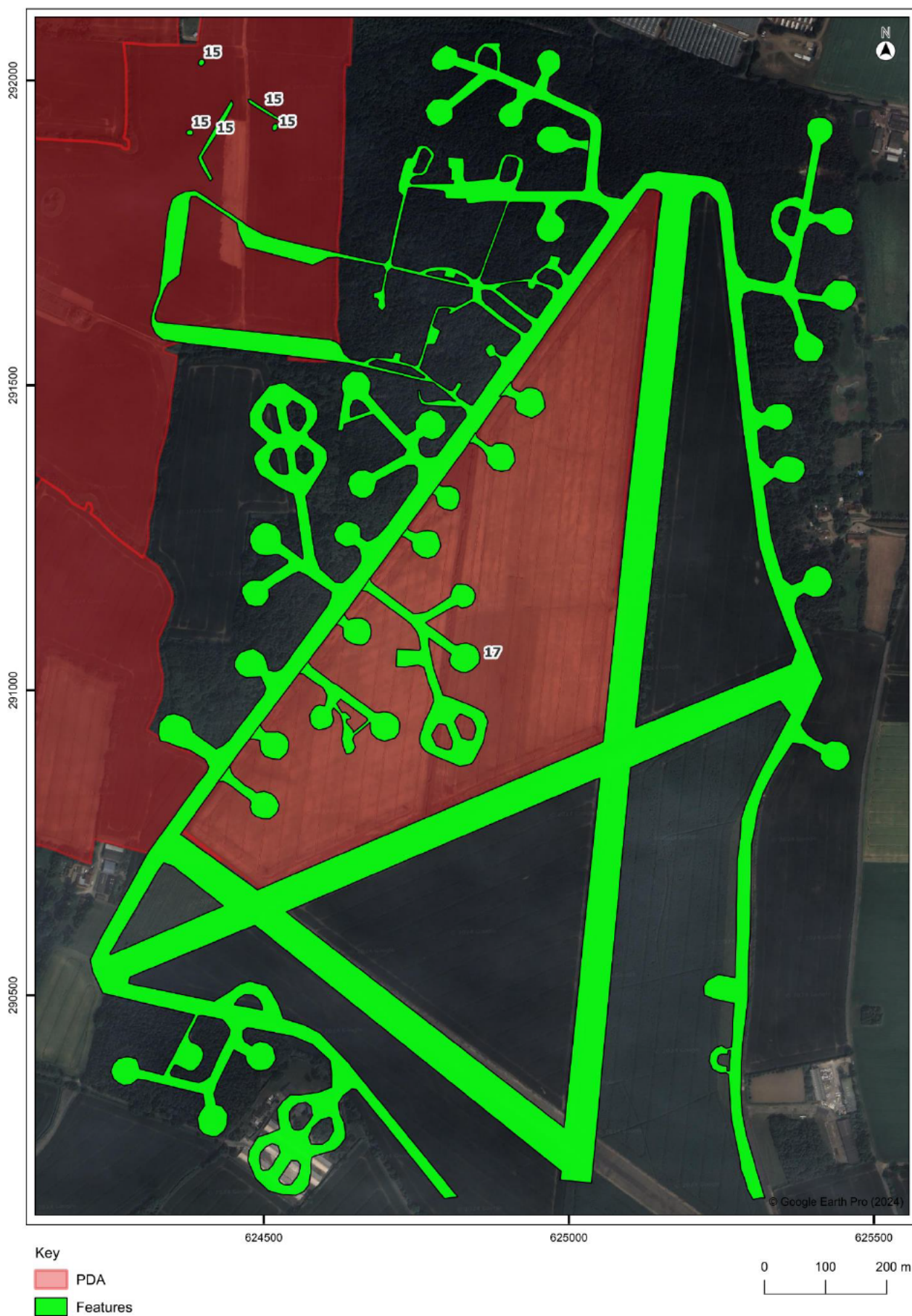
ferrous spread during the geophysical survey of the PDA. The barracks consist of four buildings measuring approximately 10m x 7m extending into the south-eastern corner and eastern side of Area 73.



Illus 69. Feature HA 17 as shown on aerial photographs held in the Historic England Archive and by the Norfolk Air Photo Service (ref. RAF/106G/UK/1429/3340)



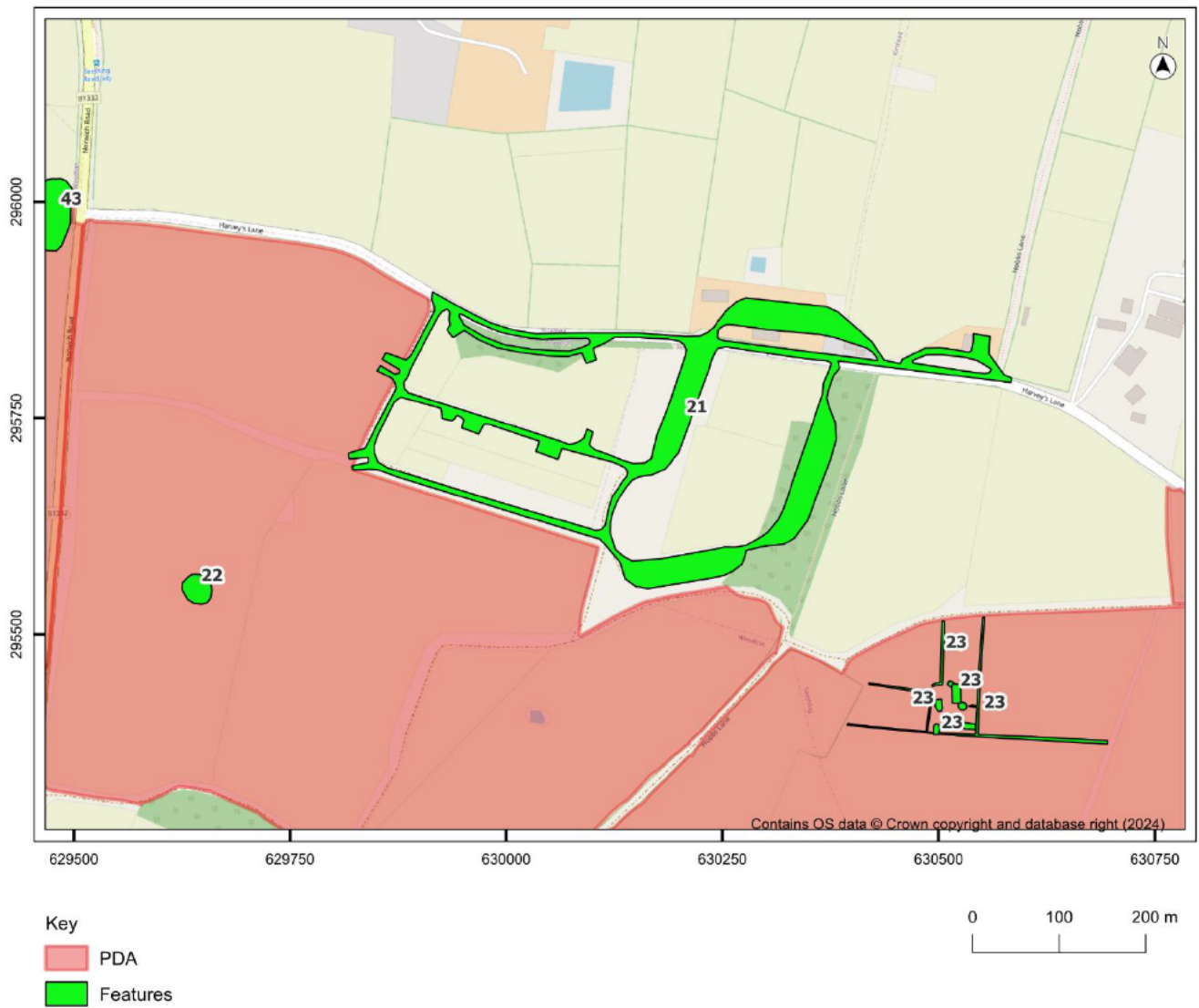
Illus 70. Unannotated LiDAR DTM imagery at 1m resolution with hillshade and colour ramp showing HA 17



Illus 71. Feature HA 17 and surrounding features as mapped by this AIM project overlain onto Google Earth Pro imagery



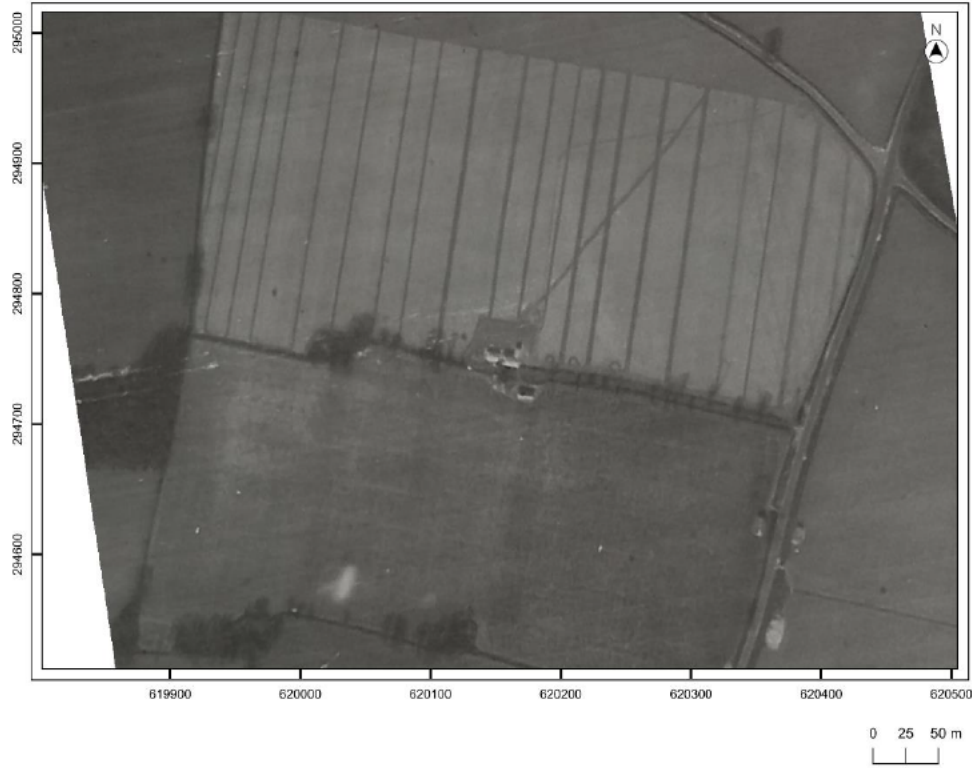
Illus 72. Feature HA 21 as shown on aerial photographs held in the Historic England Archive and by the Norfolk Air Photo Service (ref. RAF/106G/UK/1636/3101)



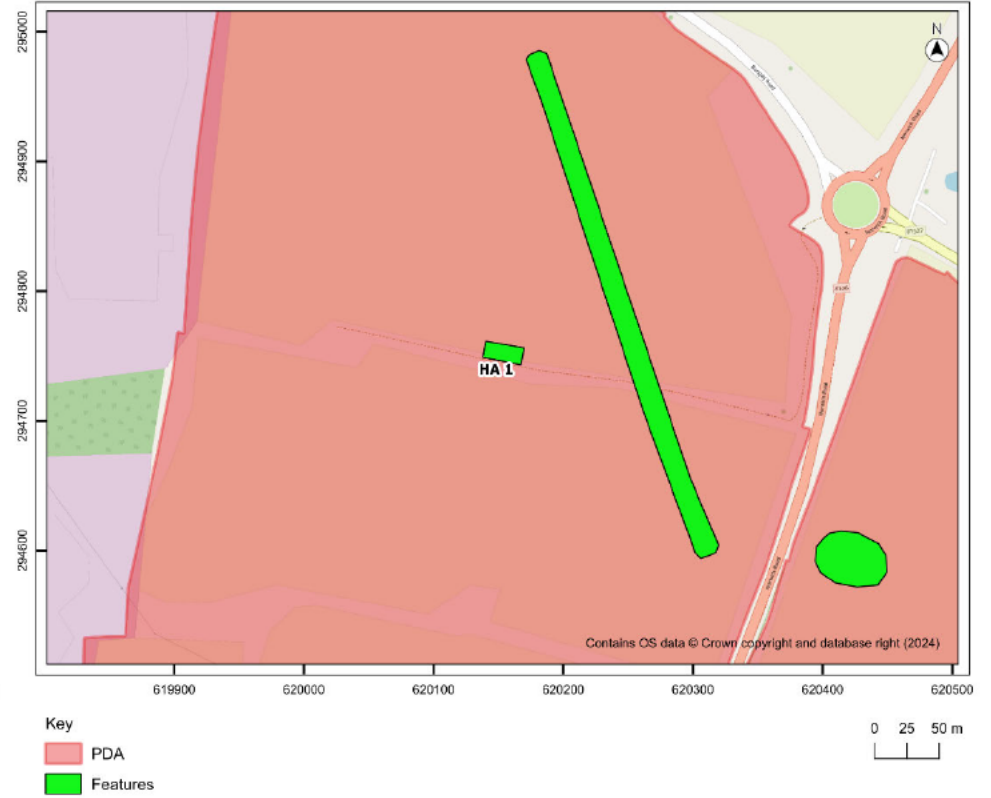
Illus 73. Feature HA 21 and surrounding features as mapped by this AIM project overlain onto 1:2500 OS mapping

5.6. *Modern buildings and agricultural or other features*

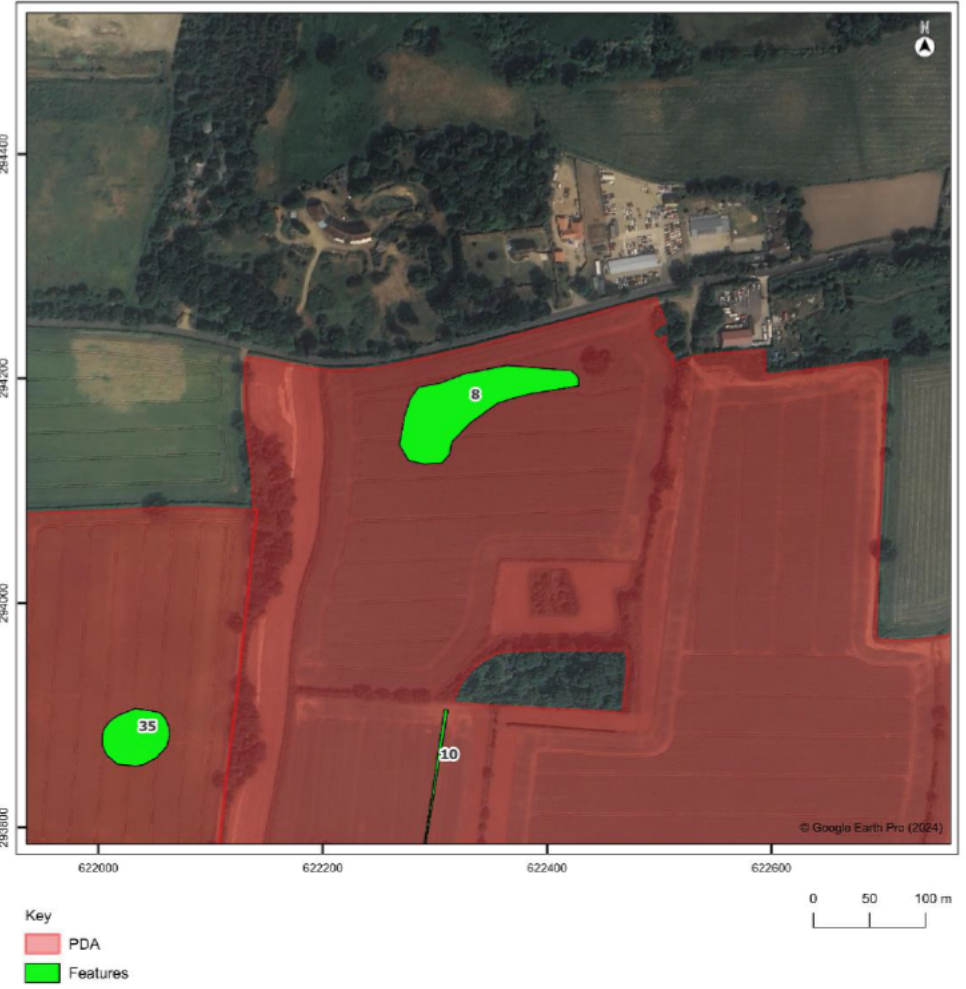
- 5.6.1. In Area 5, two small rectangular buildings, HA 1, are shown on aerial photographs held in the Historic England Archive (Illus. 74 and 75). Each building measures c.10m x 7.5m. The buildings likely had an agricultural use and are now demolished. No trace of them was identified during the geophysical survey of the PDA. HA 1 is not currently recorded on the HER.
- 5.6.2. A distinct amorphous anomaly aligned roughly east – west, HA 8, is present at the northern edge of Area 24 (Illus. 76 and 77). The feature is visible on all sources except the Historic England Archives. Its earthworks present as slight mounds and depressions. HA 8 was recorded during the geophysical survey as a ferrous anomaly and does not appear on historic mapping or the HER. HA 8 is believed most likely to be related to the construction of the B1527, which lies to its immediate north (for example, a spoil heap).
- 5.6.3. Linear land drains are shown as cropmarks on Google Earth Pro and Bing Maps imagery in Areas 83, 215, 220 and 221. Soilmarks and LiDAR imagery of other linear features within Area 110, HA 26, are thought most likely to be agricultural in function and recent in date (Illus. 88). As such modern features, these are not discussed further here.
- 5.6.4. LiDAR imagery records the slightly raised earthworks of a rectangular anomaly, HA 31, in the north-west corner of Area 148 (Illus. 37 - 39). The internal length of HA 31 is c.72m, its internal width is c. 45m, and its boundaries are c. 3m in width. HA 31 was not identified on any other consulted sources. Although the HER records the findspots of Romano-British and Late Saxon to post-medieval finds within this Area (HER MNF64157), the shape of HA 31 and its location immediately adjacent to a modern road mean that it is most likely related to modern agriculture.
- 5.6.5. In Area 165, LiDAR imagery records a series of earthworks, HA 39 (Illus. 78 and 79), corresponding to series of water management features shown on aerial photographs held by the Norfolk Air Photo Service (ref TM2393/93-358/31 dated 6th July 1993). The earthworks are of the form of three curvilinear or ring-ditch features, two rectilinear features and a circular feature and have a total area of c. 167m x 48m. HA 39 is not shown on historic mapping and appear to have been infilled, as it is not shown on modern mapping or aerial photographs held by Google Earth Pro and Bing Maps. HA 39 is not recorded on the HER.



Illus 74. Feature HA 1 as shown on aerial photographs held by the Norfolk Air Photo Service (ref. RAF/106G/UK/1429/ 4250)



Illus 75. Feature HA 1 as mapped by this AIM project overlain onto 1:2500 OS mapping (other features unlabelled apart for clarity)

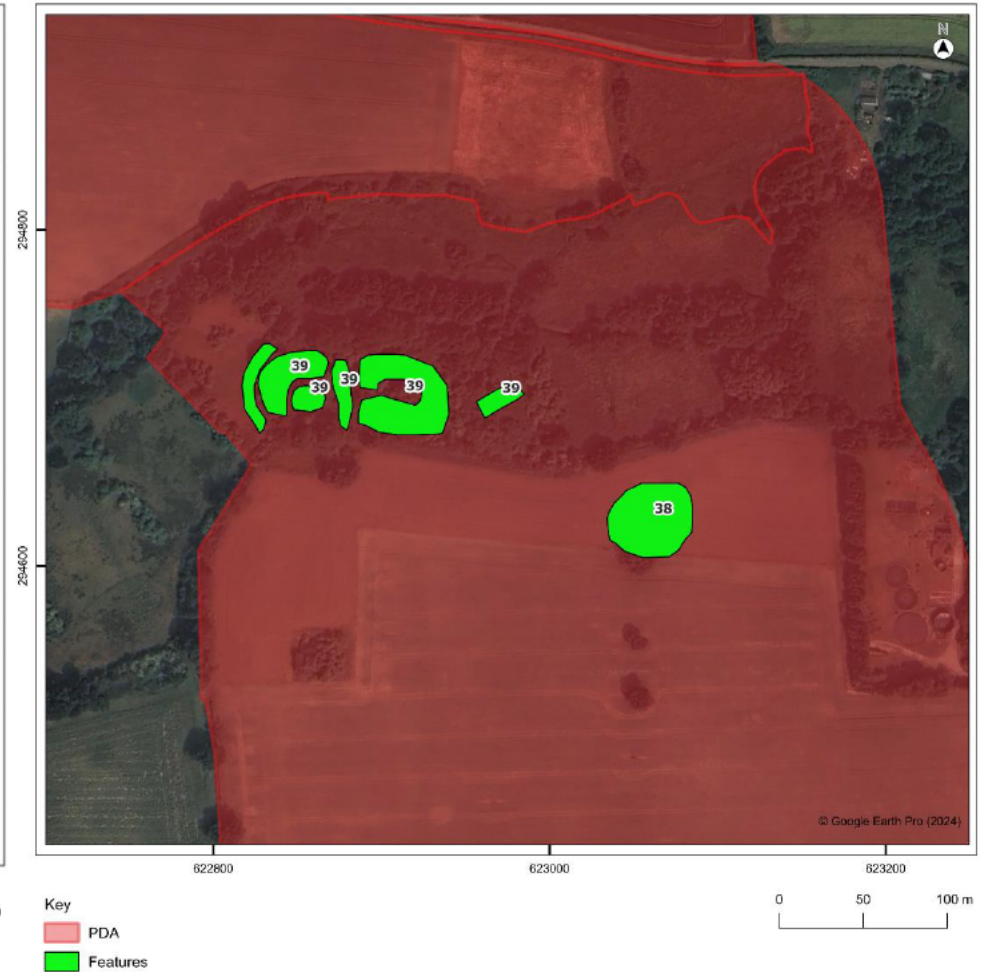


Illus 76. Unannotated LiDAR DTM imagery at 1m resolution with hillshade and colour ramp showing HA 8

Illus 77. Feature HA 8 as mapped by this AIM project overlain onto Google Earth Pro imagery



Illus 78. Unannotated LiDAR DTM imagery at 1m resolution with hillshade and colour ramp showing HA 39



Illus 79. Feature HA 39 as mapped by this AIM project overlain onto Google Earth Pro imagery

5.7. Geological features

- 5.7.1. A very large circular feature measuring c.195m x 175m, HA 13, was identified on all consulted sources in Areas 39, 40 and 41 (Illus. 80 and 81). This presents as a depression of around 2m depth. HA 13 was identified on the geophysical survey as an undetermined spread of most likely geological origin. The morphology of HA13's earthworks may instead indicate that it represents the remains of an extraction pit.
- 5.7.2. The tithe apportionment field names of Areas 39 and 41 are unusual and have the potential to assist in the interpretation of HA 13. Area 39, corresponding to Tithe plot 113, is named as Lower Wees in the tithe apportionment, whilst Area 41, corresponding to Tithe Plot 114, is named as Upper Wees. The etymology of the field name element 'wees' could not be ascertained from available sources and is uncommon or dialectic such that it does not appear in national field name dictionaries⁴⁶. It is thought unlikely to derive from Old English *wēll* (well), *wēt* (wet) or *wīc* (dairy farm), even given the influence of local dialect, as these field names tend to retain 'l', 't' or 'ck' (cf. Mills and Cavill). It is possible that 'wees' derives from 'Whewes', 'a name of unknown significance but widely distributed throughout the south of England'⁴⁷. There is, however, an outside possibility that the field name is Old English *wēoh*, 'site of a heathen temple', which in place names often evolves into 'wee'⁴⁸.

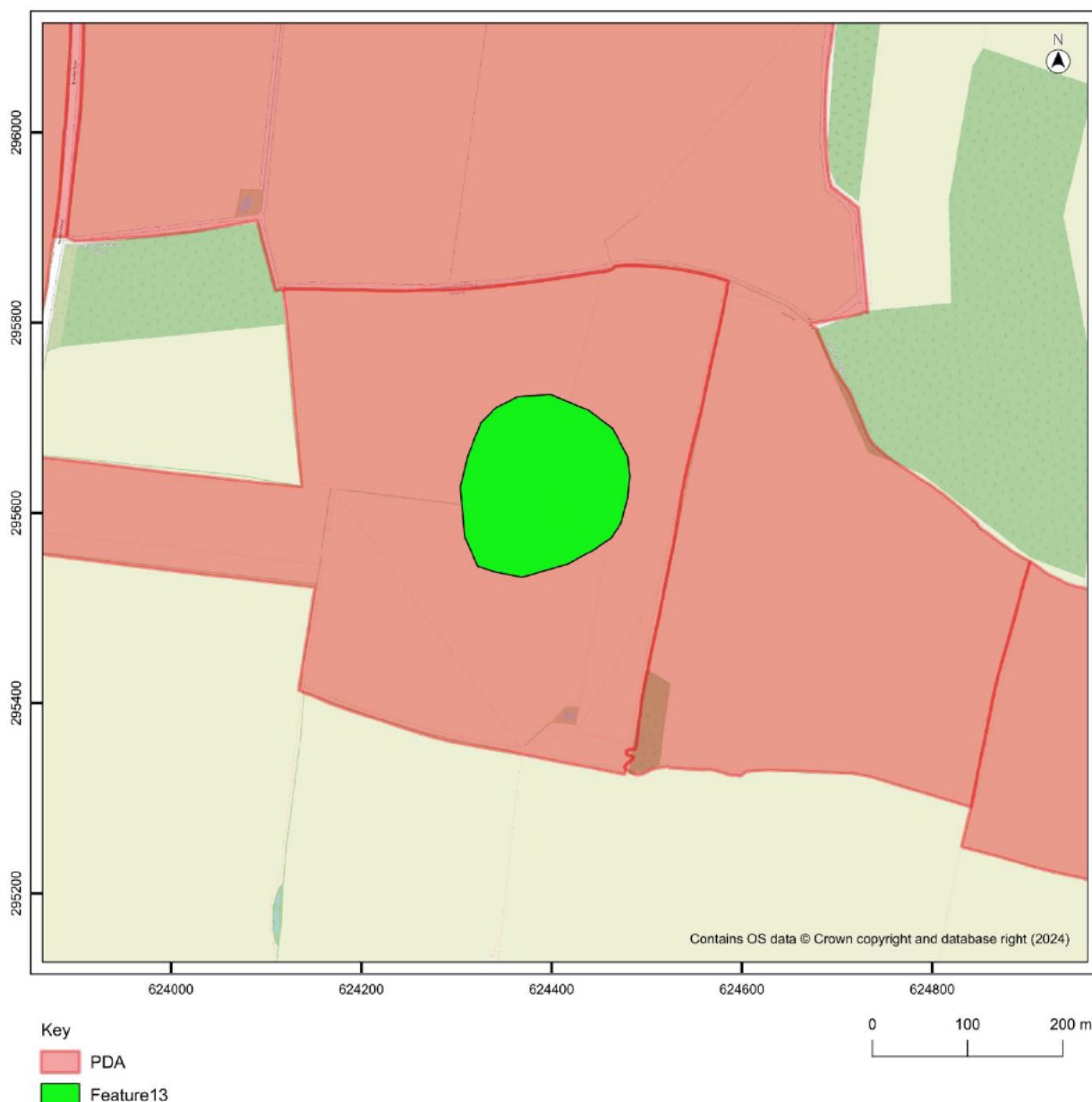


Illus 80. Unannotated LiDAR DTM imagery at 1m resolution with hillshade and colour ramp showing HA 13

⁴⁶ Although it may appear in regional English Place Name Society publication, not available for consultation during this project

⁴⁷ Cavill 2018, 457

⁴⁸ Mills 2011, 487



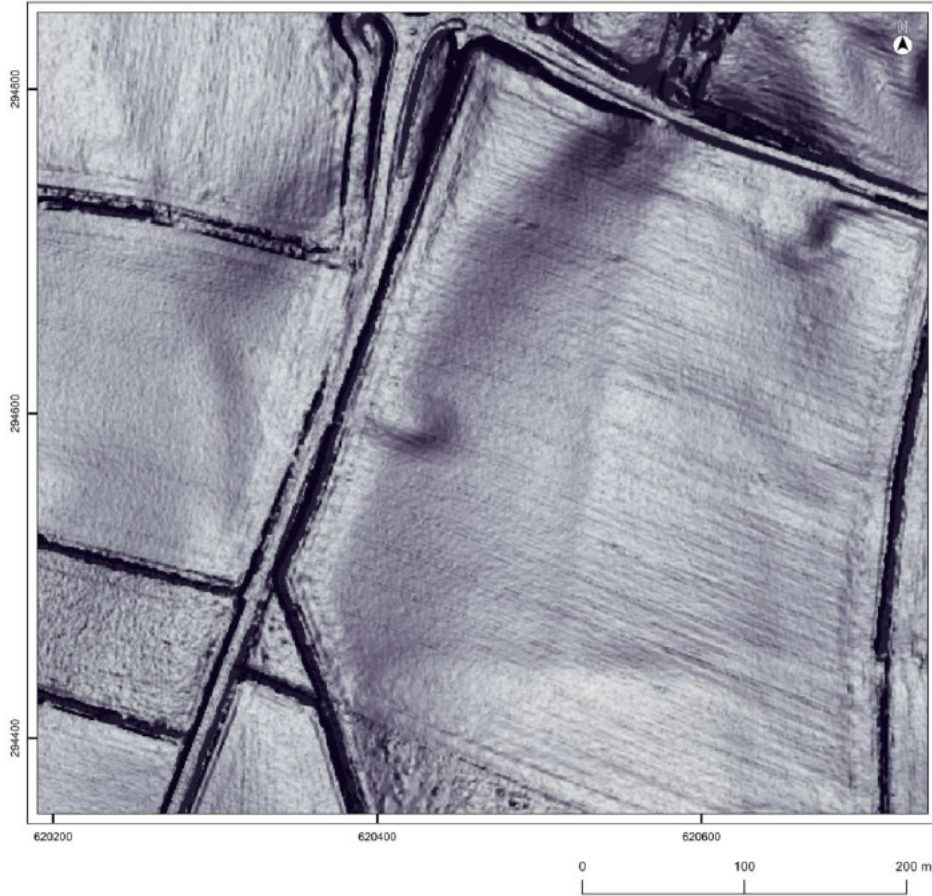
Illus 81. Feature HA 13 as mapped by this AIM project overlain onto 1:2500 OS mapping

5.8. Features of unknown origin or date

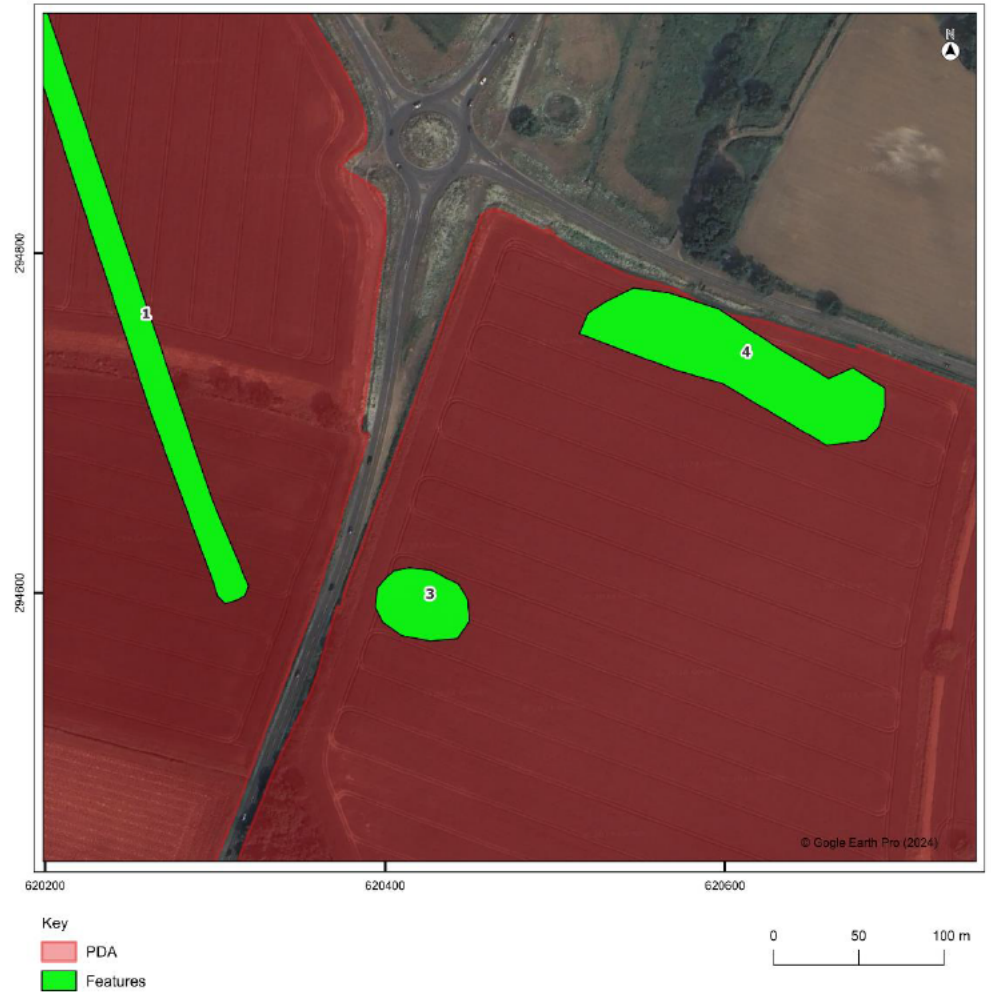
- 5.8.1. Within Area 5, a north-west to south-east orientated linear measuring c.410m x 16m and corresponding to a weak anomaly of possible archaeological origin recorded on geophysical survey data, HA 2, has been identified as slightly raised earthworks on LiDAR imagery and cropmarks on aerial photographs held by the Norfolk Air Photo Service (Illus. 82 and 83). HA 2 clearly represents an element of the enclosure mapped by the geophysical survey but its date is not known. HA 2 is not recorded on the HER.
- 5.8.2. The earthworks of a slight depression and cropmarks of an ovoid feature measuring c.55m c 40m, HA 3, is visible at the western wide of Area 9 on aerial photographs held in the Historic England Archive and on LiDAR imagery (Illus. 82 and 83). Like HA 43, the site of a possible medieval building discussed above, HA 3 lies hard up against a road, the A140. This road is recorded in the HER as the Pye Romano-British road (HER MNF7947). Unlike HA 43, no findspots are recorded within the Area; HA 3 also has a smaller footprint than HA 43. Therefore, although HA 3 may represent the site of an unmapped historic building of Romano-British or later date, it is equally possible that it is related to an unmapped medieval or post-medieval extraction pit or pond, modern agriculture or local geology.

- 5.8.3. Google Earth Pro aerial photographs depict the cropmarks of an interconnected oval feature, linear and curvilinear, HA 14, in Area 48 (Illus. 84 and 85); HA 14 was not identified on any other sources consulted. The cropmarks present as a dark-coloured linears within a lighter coloured field. The oval feature has an internal area of c. 51m x c.30m and is defined by ditches of between c. 3.5m x c. 9.5m width. The rectilinear feature has an internal length of c. 140m and width of c. 33m and is defined by ditches of around 4m width. These two features are connected by linear of c. 4m width and c. 58m length. HA 14 was not identified during the geophysical survey of the PDA and is not recorded on the HER. It also does not appear as field boundaries or ponds shown on tithe or 1st - 2nd edition OS maps, although the rectilinear feature does appear to respect the line of Woodton Road to its immediate east. The origin and function of HA 14 is therefore unknown, However, the shape, form and dimensions of its elements, especially the oval feature, are highly reminiscent of HA 10, the cropmarks of the post-medieval 'Long Plantation'. It is therefore thought most likely that 14 relates to the boundary of an unmapped medieval - post-medieval plantation.
- 5.8.4. The cropmarks of two intersecting curvilinear features in Area 68 and a possible truncated rectilinear in Area 69, HA 20, are present on aerial photographs held only by the Norfolk Air Photo Service (ref. TM2798/72-034/130 dated 22nd March 1973; Illus. 86 and 87). The curvilinears in Area 68 measure c. 188m x 7m and c. 88m x 4m. The possible rectilinear in Area 69 has an internal area of c.130m x 65m and its ditches are c. 4.5m wide. The curvilinears within Area 68 may relate to an area of enclosures, linears and curvilinears identified on geophysical data and described as probable archaeology. The possible rectilinear in Area 69 was not recorded during the geophysical survey of the PDA. As the HER records that medieval to post-medieval finds have been recovered from adjacent Area 67 (HER MNF69327), HA 20 may be medieval or post-medieval in date. However, an earlier date cannot be ruled out.
- 5.8.5. An oval anomaly measuring c. 44m x 30m, HA 51, is visible as earthworks and cropmarks in the north-west corner of Area 233 on LiDAR imagery and aerial photographs held by Google Earth Pro and Bing Maps (see Illus. 18 and 19). LiDAR data records its surviving earthworks as a slight depression of less than 0.4m depth. HA 51 appears to respect modern field boundaries and is not recorded on the HER. The date of this feature is unknown, but its shape and location could suggest that it relates to a prehistoric burial site or the remains of an unmapped medieval or post-medieval building. Equally, it may reflect modern agricultural practice (such as the site of a temporary building or spoil heap), which may be most likely given that it appears only on 21st century aerial photographs. A further possibility is that it is geological in nature.
- 5.8.6. The cropmarks of numerous small circular and subcircular features, HA 61, are visible on aerial photographs held only by the Norfolk Air Photo Service (ref. TM2798/72-034/130 dated 22nd March 1973) in the south-west and north-western areas of Area 64 (Illus 86 and 87). HA 61 covers a total area of c.305m x 245m. The features form a zig zagging pattern in the south-western area which gradually becomes less clear as the features extend into the north-eastern area. Although an archaeological origin cannot be ruled out, such as prehistoric pit alignments or modern military infrastructure, it is thought most likely that HA 61 represents either an unmapped plantation or geological features⁴⁹.

⁴⁹ cf. Wilson 2000, Figures 95 and 107; Massey and Albone 2007, 13; Albone and Massey 2008, 26



Illus 82. Unannotated LiDAR DTM imagery at 1m resolution with hillshade and colour ramp showing HA 1, 3 and 4



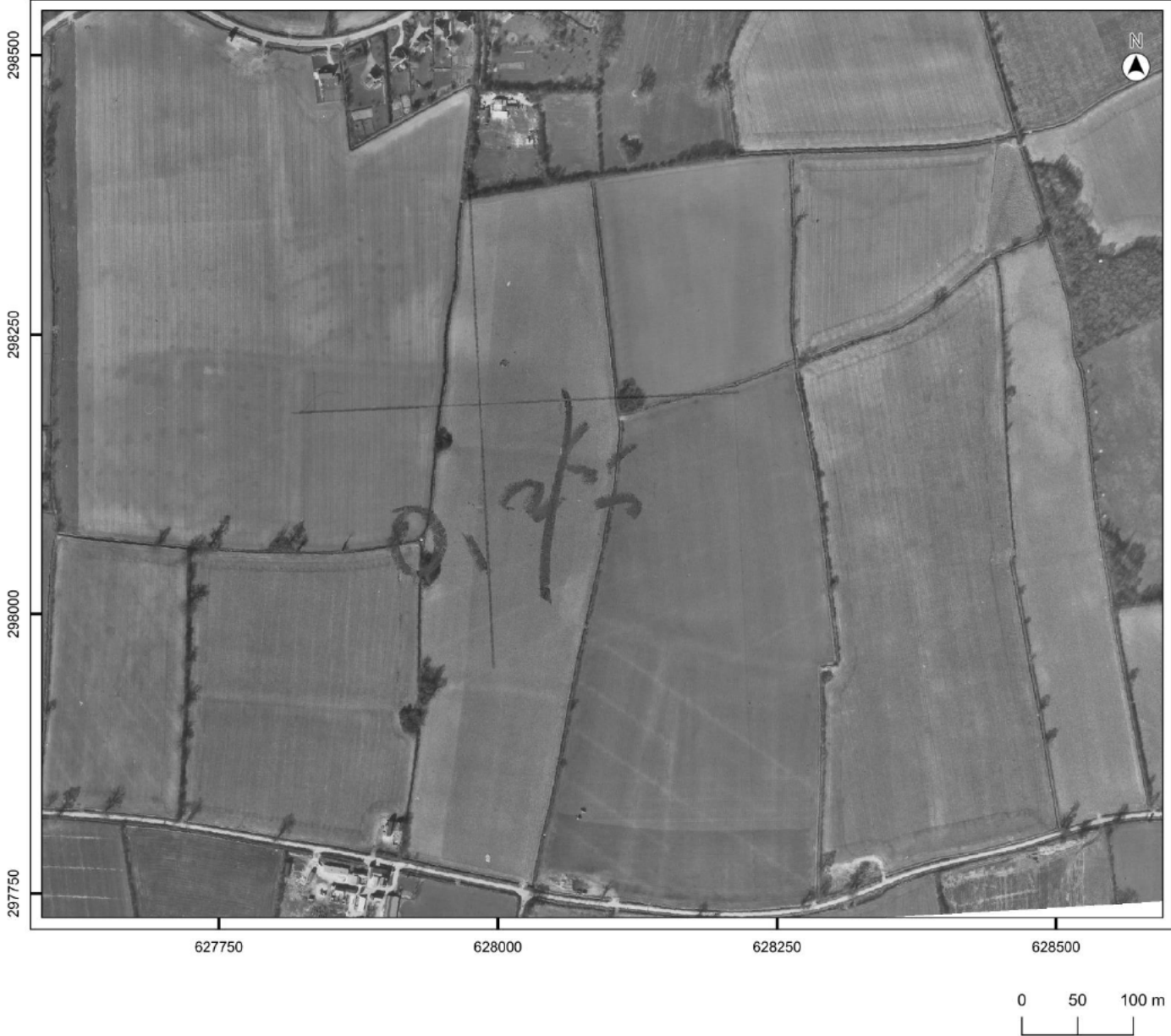
Illus 83. Feature HA 8 as mapped by this AIM project overlain onto Google Earth Pro imagery



Illus 84. Feature HA 14 as shown on aerial photographs held by Google Earth Pro, dated July 2016



Illus 85. Feature HA 14 as mapped by this AIM project overlain onto georectified Google Earth Pro imagery



Illus 86. Features HA 20 and HA 61as shown on aerial photographs held by the Norfolk Air Photo Service (ref. TM2798/72-034/130)



Illus 87. Features HA 20 and HA 61 as mapped by this AIM project overlain onto georectified Google Earth Pro imagery

6. Assessment of Importance

- 6.1.1. Although not usually a component of AIM projects, the likely importance of the features identified is assessed in order to inform any possible future decisions regarding archaeological investigation or mitigation requirements for the forthcoming planning application which this report will support.
- 6.1.2. It is highlighted here that, as the nature, date and function of the identified features have not been verified through archaeological investigation, it is possible that their true importance is distinct to that which is assessed below. Their importance may ultimately be greater as well as lesser to that ascribed.
- 6.1.3. The following identified features are specified as research agenda items in the East of England Research Framework. They are therefore of at least Medium (Regional) importance (see Table 2):
- Features relating to probable or possible Neolithic – Bronze Age ring settlements, ditches, and possible extraction pits⁵⁰ (HA 5, 18, 22, 27, 50a and 55)
 - Features relating to possible Iron Age or Romano-British settlements and enclosures (HA 15, 25a, 28a, 33 and 40)
 - Features relating to Deserted or Shrunken Medieval or Post-Medieval Villages (HA 30a, 46, and 58)
 - Features relating to possible medieval moats (HA 62)
 - Remains of unmapped or unmapped known or possible medieval or post-medieval buildings (HA23, 24, 43 and 48)
 - Features relating to WW2 military infrastructure (HA 17 and 21)
- 6.1.4. The following identified features are not specified as research agenda items in the East of England Research Framework as they are asset types that are already well understood. However, these features fossilise elements of the local and regional historic landscape and may contain archaeological or environmental evidence which broadens an understanding of the period to which they pertain. They are therefore deemed to be of Low (Local) importance:
- All sites relating to probable or possible post-medieval small-scale industry (HA 4, 53, 54a and 56)
 - All sites of mapped or unmapped medieval or post-medieval plantations, field boundaries, ponds and extraction pits.
- 6.1.5. All identified features of modern date not pertaining to military infrastructure are therefore deemed to be of Negligible importance as they are not specified as research agenda items in the East of England Research Framework and do not provide information about the local or regional historic landscape.
- 6.1.6. Identified features HA 2, HA 3, HA 13, HA 14, HA 20, HA 51 and HA 61 are of unknown date and/or could be of geological rather than archaeological origin, and are therefore of unknown importance:

⁵⁰ East of England Research Framework agenda items Neo 12, Neo 17, E-MBA 15, LBA-MIA 09, LIA-Rom 13; Med (Rural) 13; Med (Rural) 14; P-Med 05; P-Med 06; P-Med 15

7. Conclusions

- 7.1.1. This Aerial Investigation and Mapping project has identified, described and assessed the importance of cropmarks, soilmarks, earthworks and standing structures identified on modern and historic aerial photographs and LiDAR imagery within the PDA. The aim of the project is to inform any possible future decisions regarding archaeological investigation or mitigation requirements for the forthcoming planning application which this report will support and to create a record of the identified features for inclusion in the Norfolk Historic Environment Record (HER).
- 7.1.2. In total, 56 new potential heritage assets have been identified and eight existing HER records have been augmented as a result of this AIM project.
- 7.1.3. The following archaeological, modern and geological features have been mapped:
- One possible Neolithic – Bronze Age settlement site, four probable or possible Neolithic – Bronze Age ring ditches and one possible Neolithic – Bronze Age extraction pit of Medium (Regional) importance;
 - Five possible Iron Age or Romano-British dwellings or farmsteads and associated features of Medium (Regional) importance;
 - Three Deserted or Shrunken Medieval or Post-Medieval Villages of Medium (Regional) importance;
 - Five probable medieval or post-medieval sites of small-scale industry, four sites of mapped or possible medieval or post-medieval buildings, four medieval or post-medieval field systems and enclosures, one mapped post-medieval plantation and one possible medieval or post-medieval plantation, 178 mapped post-medieval field boundaries or ponds and 21 probable or possible unmapped medieval or post-medieval extraction pits or ponds and two probable unmapped medieval or post-medieval field boundaries of Low (Local) importance;
 - Two WW2 military airfields of Medium (Regional) importance;
 - Six modern buildings and agricultural or other features of negligible or Low (Local) importance;
 - One probable geological feature;
 - Six features of unknown origin and unknown importance.
- 7.1.4. No cropmarks, soilmarks, earthworks or standing structures were identified within Areas 1 – 4, 10, 11, 15, 50, 77, 78, 91, 92, 95, 102 – 105, 112 – 115, 139, 141, 149, 150, 156, 161, 164, 174, 175, 185, 186, 192, 194, 196, 198, 200, 202, 207, 213, 214, 218, 219, 223, 227, 229 and 242. No cropmarks, soilmarks or earthworks relating to ridge and furrow agriculture were identified.

8. GLOSSARY

Definitions

Term	Definition
Designated Heritage Asset	Assets registered on the National Heritage List for England. These may be protected by primary legislation (e.g. listed buildings, conservation areas, scheduled monuments) or have a non-statutory designation (e.g. World Heritage Sites, registered battlefields, registered parks and gardens, designated wrecks)
Heritage Asset NPPF (Annex 2)	<p>"A building, monument, site, place, area or landscape identified as having a degree of significance meriting consideration in planning decisions, because of its heritage interest."</p> <p>Some heritage assets are designated as Scheduled Monuments, Listed Buildings, World Heritage Sites, Conservation Areas, Registered Parks and Gardens, Registered Battlefields, or locally designated through policies in the Local Plan. Undesignated assets may be recorded in Historic Environment Records, while many other assets are currently unrecorded.</p> <p>Information contained in HERs and SMRs is not definitive, since they may include features which, for instance, have been entirely removed, or are of uncertain location, dubious identification, or negligible importance. The identification of undesignated heritage assets is therefore to some extent a matter of professional judgement.</p> <p>Both discrete features, and extensive landscapes defined by a specific historic event, process or theme, can be defined as heritage assets; and assets may overlap or be nested within one another.</p>
Non-Designated Heritage Asset	Assets identified by the local planning authority or national registers for the historic environment which have no formal designation but are considered to have a degree of significance meriting consideration in planning decisions. These can include locally listed buildings, information on sites held by the relevant Historic Environment Record and National Record of the Historic Environment

Terms

Term	Definition
Artefact	An item of archaeological interest
Baseline	'Baseline conditions' are the environmental conditions in existence just before the occurrence of an impact – i.e. they are the conditions that would be affected.
Bronze Age	The period of human activity between 2,500 BCE and 700 BCE
Cropmark	Area of lighter or darker coloured crops reflecting below-ground archaeological remains arising from differences in crop growth
Earthwork	The moving of soil or rock to reconfigure the topography of a site.
Enclosure	A single or collection of boundaries surrounding a parcel of land. e.g.: hedgerows, walls, ditches, earth banks, fences etc.

Term	Definition
Geology	Geology is the study of solid earth, the material of which it is composed (principally rocks) and the processes by which they evolve.
Geophysical survey	Method of non-intrusive investigation involving the use of magnetometers to identify fluctuations in the earth's magnetic field which might indicate the presence of archaeological remains. Burnt remains and metals are best identified through this method of survey.
Heritage asset	An item of heritage interest, for example an historic building or an archaeological find.
Historic Environment Records (HER)	A database maintained by individual counties or local authorities, containing records of archaeological sites, historic buildings and other aspects.
Inclosure	A process of consolidating and adding fixed boundaries to agricultural fields by act of parliament, local government or, in some cases, by formal civil contract. The spelling of "inclosure" changed by time and location and thus, acts of "Inclosure" or "Enclosure" are interchangeable in the historical record. In this report, Inclosure is used for consistency.
Iron Age	The period of human activity between 700 BCE and 43 CE
Medieval	The period of human activity between 1066 CE and 1550 CE
Mitigation	Measures which have the purpose of avoiding, reducing or compensating for adverse environmental impacts. It may also include measures to create environmental benefits.
Modern	The period of human activity from 1900 to the present day
National Mapping Programme (NMP)	A project funded by Historic England and local councils involving assessment and interpretation of aerial photographs and other remote sensing data, such as LiDAR.
Neolithic	New Stone Age. The period of human activity between 4,500 BCE and 2,500 BCE
Ordnance Datum	The standard measure of sea level in the UK, from which all heights are measured for mapping purposes.
Post-medieval	The period of human activity between 1550 CE and 1900 CE
Prehistoric	The period before the year 43 CE
Romano-British	The period of human activity between 43 CE and 410 CE
Saxon	The period of human activity between 410 CE and 1066 CE
Soilmark	Areas of lighter or darker coloured soil reflecting below-ground archaeological remains caused by the disturbance of such remains by ploughing

Abbreviations and Acronyms

AOD	Above Ordnance Datum (above sea-level)
AP	Aerial Photograph
BGS	British Geological Survey
c.	Circa
CIfA	Chartered Institute for Archaeologists
DBA	Desk-based Assessment
DMV/SMV	Deserted/Shrunken Medieval Village
HA	Headland Archaeology
HER	Historic Environment Record
LPA	Local Planning Authority
LiDAR	Light Detection and Ranging
NGR	National Grid Reference
OS	Ordnance Survey
RO	Registered Organisation (with CIfA)

References

Bibliographic references

- Albone, J. and Massey, S. 2008. *The Archaeology of Norfolk's Aggregate Landscape: Results of the National Mapping Programme*. English Heritage Project No: 5241MAIN
- British Geological Society (BGS) 2024a. *GeoIndex Onshore*. <https://mapapps2.bgs.ac.uk/geoindex/home.html> accessed 23.08.2024
- British Geological Society (BGS) 2024b. *The BGS Lexicon of Named Rock Units*. <https://webapps.bgs.ac.uk/lexicon/> accessed 23.08.2024
- Brudenell, M. 2024. East of England Research Framework: Late Bronze Age to Middle Iron Age Resource Assessment. Available to view at <https://researchframeworks.org/eoe/resource-assessments/late-bronze-age-to-middle-iron-age/#section-1>
- Cavill, P. 2018. *A New Dictionary of English Field-Names*. English Place Name Society
- Cooper, A. 2024. East of England Research Framework: Early & Middle Bronze Age Resource Assessment. Available to view at <https://researchframeworks.org/eoe/resource-assessments/early-and-middle-bronze-age/#section-12>
- East of England Research Framework 2024. *Research Agenda*. Available to view at <https://researchframeworks.org/eoe/research-agenda>
- Evans, S. 2019. *Historic England Aerial Investigation & Mapping (formerly National Mapping Programme) Standards Technical Review*. Historic England Research Report Series 46-2019
- Evans, C. 2024. East of England Research Framework: Late Iron Age & Romano-British Resource Assessment. Available to view at <https://researchframeworks.org/eoe/resource-assessments/late-iron-age-and-Romano-British/#section-1>
- Historic England 2019. *Using Airborne Lidar in Archaeological Survey: The Light Fantastic*
- Last, J., Outram, Z and Bye-Jensen, P. 2024. East of England Research Framework: Neolithic Resource Assessment. Available to view at <https://researchframeworks.org/eoe/resource-assessments/neolithic/#section-1>
- Lawson, A. J. 1986. Barrow Excavations in Norfolk, 1950-82. *East Anglian Archaeology* 29
- Magnitude Surveys 2024. *Geophysical Survey Report: Long Stratton Solar*. Unpublished client report MSTM1774
- Massey, S. and Albone, J. 2007. *The Archaeology of Norfolk's Broads Zone: Results of the National Mapping Programme*. English Heritage Project No: 2913
- Mills, A. D. 2011. *A Dictionary of British Place Names*. Oxford University Press
- National Library of Scotland 2024. <https://maps.nls.uk/os/> accessed 17.09.2024
- Norfolk County Council 2018. *Standards for Development-Led Archaeological Projects in Norfolk*
- Norfolk County Council 2024. *Map Image Viewer*. Available to view at <http://www.historic-maps.norfolk.gov.uk/> accessed 17.09.2024
- Powell, J. and Tremlett, S. 2023. *Aylsham and Brampton Aerial Investigation and Mapping Project, Norfolk*. Historic England Research Report Series 24-2023
- Wilson, D. R. 2000. *Air Photo Interpretation for Archaeologists* (2nd edition). Tempus Publishing Ltd

Historic maps

1797. A Topographical Map of the County Norfolk. Faden, W.
1826. The County of Norfolk. Bryant, A.
1838. Long Stratton St. Michael tithe map
- 1838 Pulham Market tithe map
1838. Seething tithe map
1839. Fritton tithe map

- 1839. Morningthorpe tithe map
- 1839. Stratton St. Mary tithe map
- 1839. Tivetshall St. Margarets tithe map
- 1840. Brooke and Saxlingham Nethergate tithe map
- 1840. Wacton tithe map
- 1841. Woodton tithe map
- 1842. Hempnall tithe map
- 1845. Moulton tithe map
- 1883. 1st edition 1:10560 OS map, Norfolk Sheet XCVI.SE
- 1884. 1st edition 1:10560 OS map, Norfolk Sheet XCVII.NE
- 1884. 1st edition 1:10560 OS map, Norfolk Sheet XCVII.NW
- 1884. 1st edition 1:10560 OS map, Norfolk Sheet XCVII.SW
- 1885. 1st edition 1:10560 OS map, Norfolk Sheet LXXXVIII.NW
- 1885. 1st edition 1:10560 OS map, Norfolk Sheet LXXXVII.SW
- 1887. 1st edition 1:10560 OS map, Norfolk Sheet LXXXVII.NE
- 1887. 1st edition 1:10560 OS map, Norfolk Sheet LXXXVII.SE
- 1906. 2nd edition 1:10560 OS map, Norfolk Sheet XCVII.NE
- 1906. 2nd edition 1:10560 OS map, Norfolk Sheet XCVII.NW
- 1906. 2nd edition 1:10560 OS map, Norfolk Sheet XCVI.SE
- 1906. 2nd edition 1:10560 OS map, Norfolk Sheet XCVII.SW
- 1907. 2nd edition 1:10560 OS map, Norfolk Sheet LXXXVII.NE
- 1907. 2nd edition 1:10560 OS map, Norfolk Sheet LXXXVII.SE
- 1907. 2nd edition 1:10560 OS map, Norfolk Sheet LXXXVII.SW
- 1908. 2nd edition 1:10560 OS map, Norfolk Sheet LXXXVIII.NW

Aerial Photographs

Aerial photographs referenced in text only.

Sortie Number	Frame Number	Date
RAF/106G/UK/930	3084	16th October 1945
RAF/106G/UK/1429	3340	16 th April 1946
RAF/106G/UK/1429	4250	16 th April 1946
RAF/106G/UK/1636	3101	9 th July 1946
RAF/58/5942	32	3rd October 1963
OS/72035	4	22 nd March 1972
OS/73359	190	3 rd July 1973
OS/73359	259	3 rd July 1973
TM2794/4	15	21 st February 1989

Grid	Film	Frame	Date
TM2995	-	86	24th April 1965
TM2798	72-034	130	22 nd March 1973
TM1988	73-118	34	13 th May 1973
TM2293	73-359	212	9 th July 1973
TM1990	ATE	6	21st July 1983
-	BKS	1672	6 th August 1988
TM2094	HYK	5	2 nd July 1996
TM2094	HYK	6	2 nd July 1996
TM2393	93-358	31	6 th July 1993
TM2295	93-358	58	6 th July 1993
TM2295	93-358	76	6 th July 1993

Appendix 1: Identified cropmarks, soilmarks, earthworks and standing structures

Area	Headland Archaeology ID No.	Feature description	Easting	Northing	Source	Dimensions	Associated geophysical survey data	Associated HER data	Field name (if relevant)	Interpretation	Period	Importance
Area 1												
Area 2												
Area 3												
Area 4												
Area 5	HA 1	Two small rectangular buildings	620245	294786	Historic England Archives (RAF/106G/UK/1429/4250)	Each measures c.10m x 7.5m	No	No	N/A	Site of modern agricultural buildings	Modern	Negligible
	HA 2	Diagonal line which matches geophysical survey	620154	294752	LiDAR and Norfolk Air Photo Service	c.410m x 16m	Yes	No	N/A	Element of possible prehistoric - medieval enclosure identified on geophysical survey	Unknown	Unknown
		Field boundaries aligning with those shown on tithe and/or 1st - 2nd edition OS maps			Historic England Archives and Norfolk Air Photo Service	N/A	N/A	N/A	N/A	Post-medieval field boundaries	Post-medieval	Low
Area 6		Field boundaries aligning with those shown on tithe and/or 1st - 2nd edition OS maps			Norfolk Air Photo Service	N/A	N/A	N/A	N/A	Post-medieval field boundaries	Post-medieval	Low
Area 7		Field boundaries aligning with those shown on tithe and/or 1st - 2nd edition OS maps			LiDAR	N/A	N/A	N/A	N/A	Post-medieval field boundaries	Post-medieval	Low
Area 8		Field boundaries aligning with those shown on tithe and/or 1st - 2nd edition OS maps			LiDAR	N/A	N/A	N/A	N/A	Post-medieval field boundaries	Post-medieval	Low
Area 9	HA 3	Ovoid slight depression at western border of field	620422	294593	Historic England Archives and LiDAR	C.55m c 40m	No	No	N/A	Unknown: possibilities include the site of building, and unmapped medieval or post-medieval extraction pit or pond, a geological feature or modern agriculture	Unknown	Unknown
Area 9	HA 4	Quarry pit at northern border of field aligning with pit shown on tithe and 1st - 2nd edition OS maps	620608	294735	All consulted	c.185m x 40m	Yes	No	N/A	Post-medieval quarry pit	Post-medieval	Low
		Field boundaries aligning with those shown on tithe and/or 1st - 2nd edition OS maps			Historic England Archives and Norfolk Air Photo Service	N/A	N/A	N/A	N/A	Post-medieval field boundaries	Post-medieval	Low
Area 10												
Area 11												
Area 12	HA 5	Circular ring ditch	620767	294558	Norfolk Air Photo Service	c.30m x 28m	Yes	MNF40593 - cropmarks of ring ditch and possible Roman field system	N/A	Ring ditch	Neolithic - Bronze Age	Medium
		Field boundaries aligning with those shown on tithe and/or 1st - 2nd edition OS maps			LiDAR and Google Earth Pro	N/A	N/A	N/A	N/A	Post-medieval field boundaries	Post-medieval	Low
Area 13												
Area 14		Field boundaries aligning with those shown on tithe and/or 1st - 2nd edition OS maps			Google Earth Pro and Norfolk Air Photo Service	N/A	N/A	N/A	N/A	Post-medieval field boundaries	Post-medieval	Low
Area 15												
Area 16		Field boundaries aligning with those shown on tithe and/or 1st - 2nd edition OS maps			LiDAR	N/A	N/A	N/A	N/A	Post-medieval field boundaries	Post-medieval	Low
Area 17	HA 6	Depression in SE corner at eastern edge of field which is also marked on 1st-2nd edition OS mapping	621138	295455	LiDAR	C.69m x 42m	No	No	N/A	Possible unmapped medieval or post-medieval extraction pit or pond	Medieval - post-medieval	Low

		Field boundaries aligning with those shown on tithe and/or 1st - 2nd edition OS maps				LiDAR, Bing Maps and Google Earth Pro	N/A	N/A	N/A	N/A	Post-medieval field boundaries	Post-medieval	Low	
Area 18	HA 7	Intersecting N-S and E-W linears	622343	295534		Historic England Archive (RAF/58/5942/2)	N - S linear = c.46m length, E-W linear = c.120m length, widths of c.2.5m - 4m	No	No	N/A	Possible remains of prehistoric - medieval field system or post-medieval to modern tracks connecting Wood Farmhouse with Grove Farmhouse	Medieval - modern	Low	
		Field boundaries and sites of ponds aligning with those shown on tithe and/or 1st - 2nd edition OS maps				Norfolk Air Photo Service, Google Earth Pro and Bing Maps		N/A	N/A	N/A	N/A	Post-medieval field boundaries and ponds	Post-medieval	Low
Area 19		Field boundaries aligning with those shown on tithe and/or 1st - 2nd edition OS maps				All consulted except LiDAR		N/A	N/A	N/A	N/A	Post-medieval field boundaries	Post-medieval	Low
Area 20		Field boundaries aligning with those shown on tithe and/or 1st - 2nd edition OS maps				LiDAR, Bing Maps and Google Earth Pro		N/A	N/A	N/A	N/A	Post-medieval field boundaries	Post-medieval	Low
Area 21		Field boundaries aligning with those shown on tithe and/or 1st - 2nd edition OS maps				All consulted except Bing Maps		N/A	N/A	N/A	N/A	Post-medieval field boundaries	Post-medieval	Low
Area 22		Field boundaries aligning with those shown on tithe and/or 1st - 2nd edition OS maps				Historic England Archives, LiDAR and Google Earth Pro		N/A	N/A	N/A	N/A	Post-medieval field boundaries	Post-medieval	Low
Area 23		Field boundaries aligning with those shown on tithe and/or 1st - 2nd edition OS maps				Historic England Archives		N/A	N/A	N/A	N/A	Post-medieval field boundaries	Post-medieval	Low
Area 24	HA 8	Amorphous anomaly aligned roughly E-W located at the northern edge of the field	622329	294176		All consulted except Historic England Archives	c.185m x 45m	Recorded as ferrous anomaly	No	N/A	Believed most likely to be related to construction of the B1527, e.g. a spoil heap	Modern	Negligible	
		Field boundaries aligning with those shown on tithe and/or 1st - 2nd edition OS maps				Historic England Archives		N/A	N/A	N/A	N/A	Post-medieval field boundaries	Post-medieval	Low
Area 25		Field boundaries aligning with those shown on tithe and/or 1st - 2nd edition OS maps				Historic England Archives		N/A	N/A	N/A	N/A	Post-medieval field boundaries	Post-medieval	Low
Area 26		Field boundaries aligning with those shown on tithe and/or 1st - 2nd edition OS maps				Historic England Archives		N/A	N/A	N/A	N/A	Post-medieval field boundaries	Post-medieval	Low
Area 27	HA 9	Small semi-circular depression at the southern edge of the field immediately to the north of a small area of vegetation shown at the northern edge of Area 29 on 1st - 2nd edition OS mapping	623216	294147		LiDAR	c.63m x 25m	No	No	N/A	Possible unmapped medieval or post-medieval extraction pit or pond or continuation of area of vegetation to south (now removed)	Medieval - post-medieval	Low	
		Field boundaries aligning with those shown on tithe and/or 1st - 2nd edition OS maps				Historic England Archives and Google Earth Pro		N/A	N/A	N/A	N/A	Post-medieval field boundaries	Post-medieval	Low
Area 28	HA 10	Truncated oval feature and curvilinear corresponding to the borders of two areas of vegetation within 'Long Plantation' as shown on 1st - 2nd edition OS mapping	622279	293653		Google Earth Pro	Truncated oval = c.41m x 30m, curvilinear = c.216m x 45m	Yes	No	N/A	Post-medieval plantation	Post-medieval	Low	
		Field boundaries aligning with those shown on tithe and/or 1st - 2nd edition OS maps				Historic England Archives		N/A	N/A	N/A	N/A	Post-medieval field boundaries	Post-medieval	Low
Area 29		Field boundaries aligning with those shown on tithe and/or 1st - 2nd edition OS maps				Historic England Archives, Bing Maps and Google Earth Pro		N/A	N/A	N/A	N/A	Post-medieval field boundaries	Post-medieval	Low
Area 30	HA 11	Circular feature in approximate centre of field not corresponding to the sites of post-medieval ponds as shown on tithe mapping or the results of the geophysics	622753	293421		LiDAR	c.60m x 55m	No	No	N/A	Possible unmapped medieval or post-medieval extraction pit or pond	Medieval - post-medieval	Low	

		Field boundaries and sites of ponds aligning with those shown on tithe and/or 1st - 2nd edition OS maps			Historic England Archives, LiDAR and Google Earth Pro	N/A	N/A	N/A	N/A	Post-medieval field boundaries and ponds	Post-medieval	Low
Area 31		Field boundaries aligning with those shown on tithe and/or 1st - 2nd edition OS maps			Historic England Archives and Google Earth Pro	N/A	N/A	N/A	N/A	Post-medieval field boundaries	Post-medieval	Low
Area 32		Field boundaries aligning with those shown on tithe and/or 1st - 2nd edition OS maps			Historic England Archives and Google Earth Pro	N/A	N/A	N/A	N/A	Post-medieval field boundaries	Post-medieval	Low
Area 33		Field boundaries aligning with those shown on tithe and/or 1st - 2nd edition OS maps			Historic England Archives, Norfolk Air Photo ServiceP and Google Earth Pro	N/A	N/A	N/A	N/A	Post-medieval field boundaries	Post-medieval	Low
Area 34		Field boundaries aligning with those shown on tithe and/or 1st - 2nd edition OS maps			Historic England Archives	N/A	N/A	N/A	N/A	Post-medieval field boundaries	Post-medieval	Low
Area 35		Field boundaries aligning with those shown on tithe and/or 1st - 2nd edition OS maps			Historic England Archives, Norfolk Air Photo Service and Google Earth Pro	N/A	N/A	N/A	N/A	Post-medieval field boundaries	Post-medieval	Low
Area 36	HA 12	Small circular feature in north-eastern area of field that does not align with ponds shown on tithe and/or 1st - 2nd edition OS maps	624605	296265	Historic England Archives and LiDAR	c.19m x 18m	No	No	N/A	Possible unmapped medieval or post-medieval pond or related to modern agriculture	Medieval - modern	Low
		Field boundaries and sites of ponds aligning with those shown on tithe and/or 1st - 2nd edition OS maps			Historic England Archives, LiDAR and Google Earth Pro	N/A	N/A	N/A	N/A	Post-medieval field boundaries and ponds	Post-medieval	Low
Area 37		Field boundaries aligning with those shown on tithe and/or 1st - 2nd edition OS maps			Historic England Archives and Google Earth Pro	N/A	N/A	N/A	N/A	Post-medieval field boundaries	Post-medieval	Low
Area 38		Field boundaries aligning with those shown on tithe and/or 1st - 2nd edition OS maps			Historic England Archives	N/A	N/A	N/A	N/A	Post-medieval field boundaries	Post-medieval	Low
Area 39	HA 13	Very large circular feature of up to c. 2m depth	624390	295628	Historic England Archives, Norfolk Air Photo Service, Google Earth Pro and LiDAR	c.195m x 175m	Recorded as undetermined spread	No	Tithe Plot 113: Lower Wees	Could be geological but an archaeological origin such as an extraction pit or temple site cannot be ruled out given the earthwork morphology and field name	Unknown	Unknown
		Field boundaries aligning with those shown on tithe and/or 1st - 2nd edition OS maps			Historic England Archives and Norfolk Air Photo Service	N/A	N/A	N/A	N/A	Post-medieval field boundaries	Post-medieval	Low
Area 40	HA 13	Very large circular feature	624390	295628	Historic England Archives, Norfolk Air Photo Service, Google Earth Pro and LiDAR	c.195m x 175m	Recorded as undetermined spread	No	N/A	Could be geological but an archaeological origin such as an extraction pit or temple site cannot be ruled out given the earthwork morphology and field name	Unknown	Unknown
		Field boundaries aligning with those shown on tithe and/or 1st - 2nd edition OS maps			Historic England Archives and Norfolk Air Photo Service	N/A	N/A	N/A	N/A	Post-medieval field boundaries	Post-medieval	Low
Area 41	HA 13	Very large circular feature	624390	295628	Historic England Archives, Norfolk Air Photo Service, Google Earth Pro and LiDAR	c.195m x 175m	Recorded as undetermined spread	No	Tithe Plot 114: Upper Wees	Could be geological but an archaeological origin such as an extraction pit or temple site cannot be ruled out given the earthwork morphology and field name	Unknown	Unknown
		Field boundaries aligning with those shown on tithe and/or 1st - 2nd edition OS maps			Historic England Archives and Norfolk Air Photo Service	N/A	N/A	N/A	N/A	Post-medieval field boundaries	Post-medieval	Low
Area 42		Field boundaries aligning with those shown on tithe and/or 1st - 2nd edition OS maps			Historic England Archives, Bing Maps and Google Earth Pro	N/A	N/A	N/A	N/A	Post-medieval field boundaries	Post-medieval	Low
Area 43		Field boundaries aligning with those shown on tithe and/or 1st - 2nd edition OS maps			Historic England Archives, Bing Maps and Google Earth Pro	N/A	N/A	N/A	N/A	Post-medieval field boundaries	Post-medieval	Low

Area 44		Field boundaries aligning with those shown on tithe and/or 1st - 2nd edition OS maps			Historic England Archives, Bing Maps and LiDAR	N/A	N/A	N/A	N/A	Post-medieval field boundaries	Post-medieval	Low	
Area 45		Field boundaries aligning with those shown on tithe and/or 1st - 2nd edition OS maps			Google Earth Pro	N/A	N/A	N/A	N/A	Post-medieval field boundaries	Post-medieval	Low	
Area 46		Field boundaries aligning with those shown on tithe and/or 1st - 2nd edition OS maps			Historic England Archives and Google Earth Pro	N/A	N/A	N/A	N/A	Post-medieval field boundaries	Post-medieval	Low	
Area 47		Field boundaries aligning with those shown on tithe and/or 1st - 2nd edition OS maps			Historic England Archives and Google Earth Pro	N/A	N/A	N/A	N/A	Post-medieval field boundaries	Post-medieval	Low	
Area 48	HA 14	Interconnected oval feature, linear and rectilinear which do not align with field boundaries or ponds shown on tithe or 1st-2nd edition OS maps	627356	295872	Google Earth Pro	Total area of c. 161m x 145m	No	No	N/A	Unknown, however, the shape and form of the features, and in terms of the oval feature, the dimensions, mirror that of the cropmarks of 'Long Plantation' (10). It is therefore thought most likely that 14 relates to an unmapped medieval - post-medieval plantation.	Unknown but thought most likely to be medieval - post-medieval	Unknown	
		Field boundaries aligning with those shown on tithe and/or 1st - 2nd edition OS maps			Historic England Archives, Bing Maps and Google Earth Pro	N/A	N/A	N/A	N/A	Post-medieval field boundaries	Post-medieval	Low	
Area 49		Field boundaries aligning with those shown on tithe and/or 1st - 2nd edition OS maps			Historic England Archives, Bing Maps and Google Earth Pro	N/A	N/A	N/A	N/A	Post-medieval field boundaries	Post-medieval	Low	
Area 50													
Area 51		Field boundaries aligning with those shown on tithe and/or 1st - 2nd edition OS maps			Historic England Archives, Bing Maps and Google Earth Pro	N/A	N/A	N/A	N/A	Post-medieval field boundaries	Post-medieval	Low	
Area 52	HA 15	Truncated enclosure and three likely associated probable ovoid pits. Possible entrance of c.25m width is present in the north-west corner of the enclosure	624398	292029	Historic England Archive (OS/73359/190)	Enclosure = c.138m x 78m; pits = c. 9m - 12m x 10m - 12m	No		MNF24356 - prehistoric - post-medieval finds	N/A	Probable prehistoric - Roman enclosure and associated features	Iron Age or Roman	Medium
	HA 16	Anomalies corresponding to building shown on tithe and 1st - 2nd edition OS maps	624066	291674	LiDAR, Google Earth Pro and Bing Maps	c.58m x 40m	N/A		N/A	N/A	Remains of post-medieval building	Post-medieval	Low
		Field boundaries aligning with those shown on tithe and/or 1st - 2nd edition OS maps			All sources consulted	N/A	N/A	N/A	N/A	N/A	Post-medieval field boundaries	Post-medieval	Low
Area 53	HA 17	Military airfield	624857	291045	Historic England Archive and Norfolk Air Photo Service	c.1.9km x 1.4km	No		MNF21992 - Hardwick WW2 USAAF airfield		Military airfield	Modern	Medium
		Field boundaries aligning with those shown on tithe and/or 1st - 2nd edition OS maps			All sources consulted	N/A	N/A	N/A	N/A	N/A	Post-medieval field boundaries	Post-medieval	Low
Area 54	HA 15	Truncated enclosure and three likely associated probable ovoid pits. Possible entrance of c.25m width is present in the north-west corner of the enclosure	624398	292029	Historic England Archive	Enclosure = c.140m x 75m; pits = c. 9m - 12m x 10m - 12m	No	No	N/A		Probable prehistoric - Roman enclosure and associated features	Iron Age or Roman	Medium
		Field boundaries aligning with those shown on tithe and/or 1st - 2nd edition OS maps			Historic England Archives	N/A	N/A	N/A	N/A	N/A	Post-medieval field boundaries	Post-medieval	Low
Area 55	HA 18	Series of probable small rectilinear and curvilinear enclosures connected by a NE-SW linear	624946	292232	Google Earth Pro	c.156m x 113m		Recorded as probable archaeology	MNF68782 - Neolithic and Neolithic/Early Bronze Age polished flint handaxes	N/A	Probable prehistoric enclosure, trackway and associated features	Neolithic - Bronze Age	Medium
		Field boundaries aligning with those shown on tithe and/or 1st - 2nd edition OS maps			All sources consulted	N/A	N/A	N/A	N/A	N/A	Post-medieval field boundaries	Post-medieval	Low

Area 56	HA 17	Military airfield	624857	291045	Historic England Archive and Norfolk Air Photo Service	c.1.9km x 1.1km	No	MNF21992 - Hardwick WW2 USAAF airfield		Military airfield	Modern	Medium
		Field boundaries aligning with those shown on tithe and/or 1st - 2nd edition OS maps			LiDAR, Google Earth Pro and Bing Maps	N/A	N/A	N/A	N/A	Post-medieval field boundaries	Post-medieval	Low
Area 57	HA 17	Military airfield	624857	291045	Historic England Archive and Norfolk Air Photo Service	c.1.9km x 1.1km	No	MNF21992 - Hardwick WW2 USAAF airfield		Military airfield	Modern	Medium
		Field boundaries aligning with those shown on tithe and/or 1st - 2nd edition OS maps			LiDAR, Google Earth Pro and Bing Maps	N/A	N/A	N/A	N/A	Post-medieval field boundaries	Post-medieval	Low
Area 58	HA 19	Circular feature not shown on tithe or 1st-2nd edition OS mapping	625879	297656	Historic England Archives and LiDAR	c. 30m x 27m	No	No	N/A	Possible unmapped medieval or post-medieval pond	Medieval - post-medieval	Low
		Field boundaries aligning with those shown on tithe and/or 1st - 2nd edition OS maps			Historic England Archives , Google Earth Pro and LiDAR	N/A	N/A	N/A	N/A	Post-medieval field boundaries	Post-medieval	Low
Area 59		Field boundaries aligning with those shown on tithe and/or 1st - 2nd edition OS maps			Historic England Archives and LiDAR	N/A	N/A	N/A	N/A	Post-medieval field boundaries	Post-medieval	Low
Area 60		Field boundaries aligning with those shown on tithe and/or 1st - 2nd edition OS maps			LiDAR and Bing Maps	N/A	N/A	N/A	N/A	Post-medieval field boundaries	Post-medieval	Low
Area 61		Field boundaries aligning with those shown on tithe and/or 1st - 2nd edition OS maps			Historic England Archives and Bing Maps	N/A	N/A	N/A	N/A	Post-medieval field boundaries	Post-medieval	Low
Area 62		Field boundaries aligning with those shown on tithe and/or 1st - 2nd edition OS maps			Historic England Archives	N/A	N/A	N/A	N/A	Post-medieval field boundaries	Post-medieval	Low
Area 63		Field boundaries aligning with those shown on tithe and/or 1st - 2nd edition OS maps			Historic England Archives, Google Earth Pro and LiDAR	N/A	N/A	N/A	N/A	Post-medieval field boundaries	Post-medieval	Low
Area 64	HA 61	Numerous small circular and subcircular features in the south-west and north-western areas of the field in no clear pattern	627698	298161	Norfolk Air Photo Service (TM2798/72-034/130)	Total area = c. 305m x 245m	N/A	N/A	N/A	Unknown, but could have a combination of origins as well as a sole origin, for example: the remains of an unmapped plantation, geological features, 'fairy rings' and agricultural features	Unknown	Unknown
		Field boundaries aligning with those shown on tithe and/or 1st - 2nd edition OS maps			All sources consulted	N/A	N/A	N/A	N/A	Post-medieval field boundaries	Post-medieval	Low
Area 65		Field boundaries aligning with those shown on tithe and/or 1st - 2nd edition OS maps			Historic England Archives and Google Earth Pro	N/A	N/A	N/A	N/A	Post-medieval field boundaries	Post-medieval	Low
Area 66		Field boundaries aligning with those shown on tithe and/or 1st - 2nd edition OS maps			Historic England Archives and Google Earth Pro	N/A	N/A	N/A	N/A	Post-medieval field boundaries	Post-medieval	Low
Area 67		Field boundaries aligning with those shown on tithe and/or 1st - 2nd edition OS maps			Historic England Archives, Google Earth Pro and LiDAR	N/A	N/A	N/A	N/A	Post-medieval field boundaries	Post-medieval	Low
Area 68	HA 20	Two possible curvilinear intersecting cropmarks	628326	298375	Norfolk Air Photo Service (TM2798/72-034/130)	Area of c. 108m c 54m	Partially	MNF69327 - Medieval to post-medieval finds in Area 67	N/A	Curvilinear features of unknown date	Unknown	Unknown
		Field boundaries aligning with those shown on tithe and/or 1st - 2nd edition OS maps			Historic England Archives, Google Earth Pro and LiDAR	N/A	N/A	N/A	N/A	Post-medieval field boundaries	Post-medieval	Low
Area 69	HA 20	Possible truncated rectilinear cropmark	628496	298165	Norfolk Air Photo Service (TM2798/72-034/130)	Area of c. 140m c 65m	No	No	N/A	Enclosure of unknown date	Unknown	Unknown
		Field boundaries aligning with those shown on tithe and/or 1st - 2nd edition OS maps			Historic England Archives, Google Earth Pro and LiDAR	N/A	N/A	N/A	N/A	Post-medieval field boundaries	Post-medieval	Low
Area 70	AIM ALREADY COMPLETED											
Area 71	AIM ALREADY COMPLETED											

AIM ALREADY COMPLETED													
Area 72													
Area 73	HA 21	Westernmost side of Seething airfield barracks	630204	295747	Historic England Archive and Norfolk Air Photo Service	Area of c. 720m c 360m	Recorded as ferrous spread	MNF10466 - World War Two airfield at Seething	N/A		Military airfield	Modern	Medium
		Field boundaries aligning with those shown on tithe and/or 1st - 2nd edition OS maps			All sources consulted	N/A	N/A	N/A	N/A		Post-medieval field boundaries	Post-medieval	Low
Area 74	HA 22	Circular feature	629643	295552	Historic England Archives, Norfolk Air Photo Service and Google Earth Pro	c. 33m x 38m	Recorded as a weak undetermined anomaly	No	N/A	Possible ring ditch (of a similar size to that in Area 12)	Neolithic - Bronze Age	Medium	
		Field boundaries and ponds aligning with those shown on tithe and/or 1st - 2nd edition OS maps			Historic England Archives, Google Earth Pro and LiDAR	N/A	N/A	N/A	N/A		Post-medieval field boundaries and ponds	Post-medieval	Low
Area 75		Field boundaries aligning with those shown on tithe and/or 1st - 2nd edition OS maps			Google Earth Pro, Bing Maps and LiDAR	N/A	N/A	N/A	N/A	Post-medieval field boundaries	Post-medieval	Low	
Area 76		Field boundaries aligning with those shown on tithe and/or 1st - 2nd edition OS maps			Google Earth Pro and LiDAR	N/A	N/A	N/A	N/A	Post-medieval field boundaries	Post-medieval	Low	
Area 77													
Area 78													
Area 79	HA 23	Cropmarks and earthworks corresponding to at least six elements of the central complex of Bery Farm as shown on historic mapping and immediately associated field boundaries	630501	295418	All sources consulted	Area of cropmarks related to farm buildings c. 63m x 53m	Interpreted as an agricultural feature	No	N/A	Post-medieval building (Berry Farm) and associated features	Post-medieval	Medium	
		Field boundaries aligning with those shown on tithe and/or 1st - 2nd edition OS maps			All sources consulted	N/A	N/A	N/A	N/A		Post-medieval field boundaries	Post-medieval	Low
Area 80													
Area 81		Field boundaries and ponds aligning with those shown on tithe and/or 1st - 2nd edition OS maps			Google Earth Pro, Bing Maps and LiDAR	N/A	N/A	N/A	N/A	Post-medieval field boundaries and ponds	Post-medieval	Low	
Area 82													
Area 83		Parallel linears in dogleg formation not shown on mapping			Google Earth Pro	N/A	N/A	N/A	N/A	Land drains	Modern	Negligible	
Area 84		Field boundaries aligning with those shown on tithe and/or 1st - 2nd edition OS maps			Google Earth Pro	N/A	N/A	N/A	N/A	Post-medieval field boundaries	Post-medieval	Low	
Area 85													
Area 86		Field boundaries aligning with those shown on tithe and/or 1st - 2nd edition OS maps			Historic England Archives	N/A	N/A	N/A	N/A	Post-medieval field boundaries	Post-medieval	Low	
		Field boundaries aligning with those shown on tithe and/or 1st - 2nd edition OS maps			Historic England Archives and Google Earth Pro	N/A	N/A	N/A	N/A	Post-medieval field boundaries	Post-medieval	Low	
Area 88	HA 24	Associated small rectangular light coloured cropmark and large rectangular dark coloured cropmark corresponding to small building and enclosure on historic mapping	617175	289089	Norfolk Air Photo Service and Google Earth Pro	Area c. 95m x 88m	N/A	No	N/A	Post-medieval building and associated features	Post-medieval	Medium	
		Field boundaries aligning with those shown on tithe and/or 1st - 2nd edition OS maps			Norfolk Air Photo Service and Google Earth Pro	N/A	N/A	N/A	N/A	Post-medieval field boundaries	Post-medieval	Low	
Area 89		Field boundaries aligning with those shown on tithe and/or 1st - 2nd edition OS maps			Google Earth Pro and Bing Maps	N/A	N/A	N/A	N/A	Post-medieval field boundaries	Post-medieval	Low	

Area 90		Field boundaries aligning with those shown on tithe and/or 1st - 2nd edition OS maps			Google Earth Pro and Bing Maps	N/A	N/A	N/A	N/A	Post-medieval field boundaries	Post-medieval	Low
Area 91												
Area 92												
Area 93		Field boundaries aligning with those shown on tithe and/or 1st - 2nd edition OS maps			Historic England Archives and Google Earth Pro	N/A	N/A	N/A	N/A	Post-medieval field boundaries	Post-medieval	Low
Area 94		Field boundaries aligning with those shown on tithe and/or 1st - 2nd edition OS maps			Historic England Archives and Google Earth Pro	N/A	N/A	N/A	N/A	Post-medieval field boundaries	Post-medieval	Low
Area 95												
Area 96		Field boundaries aligning with those shown on tithe and/or 1st - 2nd edition OS maps			Historic England Archives and Google Earth Pro	N/A	N/A	N/A	N/A	Post-medieval field boundaries	Post-medieval	Low
Area 97		Field boundaries aligning with those shown on tithe and/or 1st - 2nd edition OS maps			Historic England Archives	N/A	N/A	N/A	N/A	Post-medieval field boundaries	Post-medieval	Low
Area 98		Field boundaries aligning with those shown on tithe and/or 1st - 2nd edition OS maps			Historic England Archives and Google Earth Pro	N/A	N/A	N/A	N/A	Post-medieval field boundaries	Post-medieval	Low
Area 99		Field boundaries and ponds aligning with those shown on tithe and/or 1st - 2nd edition OS maps			All sources consulted	N/A	N/A	N/A	N/A	Post-medieval field boundaries and ponds	Post-medieval	Low
Area 100		Field boundaries aligning with those shown on tithe and/or 1st - 2nd edition OS maps			Historic England Archives	N/A	N/A	N/A	N/A	Post-medieval field boundaries	Post-medieval	Low
Area 101		Field boundaries and ponds aligning with those shown on tithe and/or 1st - 2nd edition OS maps			Historic England Archives, Norfolk Air Photo Service and Google Earth Pro	N/A	N/A	N/A	N/A	Post-medieval field boundaries and ponds	Post-medieval	Low
Area 102												
Area 103												
Area 104												
Area 105												
Area 106		Field boundaries aligning with those shown on tithe and/or 1st - 2nd edition OS maps			Historic England Archives, Google Earth Pro and LiDAR	N/A	N/A	N/A	N/A	Post-medieval field boundaries	Post-medieval	Low
Area 107		Field boundaries aligning with those shown on tithe and/or 1st - 2nd edition OS maps			Historic England Archives, Google Earth Pro and LiDAR	N/A	N/A	N/A	N/A	Post-medieval field boundaries	Post-medieval	Low
Area 108		Field boundaries aligning with those shown on tithe and/or 1st - 2nd edition OS maps			Historic England Archives, Google Earth Pro and LiDAR	N/A	N/A	N/A	N/A	Post-medieval field boundaries	Post-medieval	Low
Area 109	HA 25a	Intersecting semicircular linears (x 2), curvilinear and rectilinear feature with 3 x associated possible pits	619173	288864	Historic England Archives and Norfolk Air Photo Service	c. 218m x 159m	N/A	Close to HER MNF7947 (The Pye Roman road) and HER MNF58190 (Neolithic, Roman and medieval finds)	N/A	Prehistoric - Roman enclosures	Iron Age or Roman	Medium
	HA 25b	Field boundaries aligning with those shown on tithe and/or 1st - 2nd edition OS maps - recorded here as they intersect with 25a	619144	288745	Historic England Archives, Norfolk Air Photo Service and Google Earth Pro	N/A	N/A	N/A	N/A	Post-medieval field boundaries	Post-medieval	Low
Area 110	HA 26	Series of very narrow linears and curvilinears defining no particular pattern	619465	288874	Google Earth Pro and LiDAR	c. 670m x 520m	N/A	No	N/A	Modern agriculture	Modern	Negligible
		Field boundaries aligning with those shown on tithe and/or 1st - 2nd edition OS maps			Norfolk Air Photo Service and Google Earth Pro	N/A	N/A	N/A	N/A	Post-medieval field boundaries	Post-medieval	Low

		Field boundaries and ponds aligning with those shown on tithe and/or 1st - 2nd edition OS maps			Norfolk Air Photo Service and Google Earth Pro	N/A	N/A	N/A	N/A	Post-medieval field boundaries and ponds	Post-medieval	Low
Area 111	HA 27	Circular feature	619655	289222	Google Earth Pro	c. 82m x 57m	N/A	MNF58190 - Neolithic, Roman and medieval finds	Tithe Plot 107 = New Broke, possibly deriving from OE brocen-bæc, in the sense of 'broken or divided mound', although derivations from Old English bróc 'stream' or bracc 'badger' may be more likely	Possible ring ditch	Neolithic - Bronze Age	Medium
		Field boundaries aligning with those shown on tithe and/or 1st - 2nd edition OS maps			Historic England Archives, Google Earth Pro and Bing Maps		N/A					Low
Area 112												
Area 113												
Area 114												
Area 115												
Area 116		Field boundaries aligning with those shown on tithe and/or 1st - 2nd edition OS maps			Google Earth Pro and Bing Maps	N/A	N/A	N/A	N/A	Post-medieval field boundaries	Post-medieval	Low
Area 117		Field boundaries aligning with those shown on tithe and/or 1st - 2nd edition OS maps			Google Earth Pro	N/A	N/A	N/A	N/A	Post-medieval field boundaries	Post-medieval	Low
Area 118		Field boundaries aligning with those shown on tithe and/or 1st - 2nd edition OS maps			Historic England Archives, Bing Maps and Google Earth Pro	N/A	N/A	N/A	N/A	Post-medieval field boundaries	Post-medieval	Low
Area 119		Field boundaries aligning with those shown on tithe and/or 1st - 2nd edition OS maps			Historic England Archives	N/A	N/A	N/A	N/A	Post-medieval field boundaries	Post-medieval	Low
Area 120		Field boundaries aligning with those shown on tithe and/or 1st - 2nd edition OS maps			Historic England Archives	N/A	N/A	N/A	N/A	Post-medieval field boundaries	Post-medieval	Low
Area 121		Field boundaries aligning with those shown on tithe and/or 1st - 2nd edition OS maps			Google Earth Pro	N/A	N/A	N/A	N/A	Post-medieval field boundaries	Post-medieval	Low
Area 122		Field boundaries aligning with those shown on tithe and/or 1st - 2nd edition OS maps			Google Earth Pro	N/A	N/A	N/A	N/A	Post-medieval field boundaries	Post-medieval	Low
Area 123	HA 28a	Circular cropmarks and associated pit-like features not corresponding to field boundaries or ponds shown on historic mapping	619884	290093	Historic England Archives and Norfolk Air Photo Service	Area totals c. 142m x 96m	N/A	No	Not recorded	Possible Iron Age or Roman single or multiple dwellings and associated features	Iron Age or Roman	Medium
	HA 28b	Field boundaries and ponds aligning with those shown on tithe and/or 1st - 2nd edition OS maps	619838	290114	All sources consulted	N/A	N/A	N/A	N/A	Post-medieval field boundaries and ponds	Post-medieval	Low
Area 124		Field boundaries aligning with those shown on tithe and/or 1st - 2nd edition OS maps			Historic England Archives and Norfolk Air Photo Service	N/A	N/A	N/A	N/A	Post-medieval field boundaries	Post-medieval	Low
Area 125		Field boundaries aligning with those shown on tithe and/or 1st - 2nd edition OS maps			Historic England Archives and Norfolk Air Photo Service	N/A	N/A	N/A	N/A	Post-medieval field boundaries	Post-medieval	Low
Area 126		Field boundaries aligning with those shown on tithe and/or 1st - 2nd edition OS maps			All sources consulted	N/A	N/A	N/A	N/A	Post-medieval field boundaries	Post-medieval	Low
Area 127		Field boundaries aligning with those shown on tithe and/or 1st - 2nd edition OS maps			Google Earth Pro	N/A	N/A	N/A	N/A	Post-medieval field boundaries	Post-medieval	Low

Area 128		Field boundaries aligning with those shown on tithe and/or 1st - 2nd edition OS maps			Historic England Archives and Google Earth Pro	N/A	N/A	N/A	N/A	Post-medieval field boundaries	Post-medieval	Low
Area 129	VOID											
Area 130		Field boundaries aligning with those shown on tithe and/or 1st - 2nd edition OS maps			Historic England Archives	N/A	N/A	N/A	N/A	Post-medieval field boundaries	Post-medieval	Low
Area 131		Field boundaries aligning with those shown on tithe and/or 1st - 2nd edition OS maps			Google Earth Pro	N/A	N/A	N/A	N/A	Post-medieval field boundaries	Post-medieval	Low
Area 132		Field boundaries aligning with those shown on tithe and/or 1st - 2nd edition OS maps			Historic England Archives	N/A	N/A	N/A	N/A	Post-medieval field boundaries	Post-medieval	Low
Area 133		Field boundaries aligning with those shown on tithe and/or 1st - 2nd edition OS maps			Historic England Archives	N/A	N/A	N/A	N/A	Post-medieval field boundaries	Post-medieval	Low
Area 134	VOID											
Area 135		Field boundaries aligning with those shown on tithe and/or 1st - 2nd edition OS maps			All consulted except LiDAR	N/A	N/A	N/A	N/A	Post-medieval field boundaries	Post-medieval	Low
Area 136		Field boundaries and ponds aligning with those shown on tithe and/or 1st - 2nd edition OS maps			Historic England Archives, LiDAR and Google Earth Pro	N/A	N/A	N/A	N/A	Post-medieval field boundaries and ponds	Post-medieval	Low
Area 137		Field boundaries aligning with those shown on tithe and/or 1st - 2nd edition OS maps			All consulted except LiDAR	N/A	N/A	N/A	N/A	Post-medieval field boundaries	Post-medieval	Low
Area 138	HA 29	Circular feature and square enclosure with clearly darker boundaries and dark coloured in the centre corresponding to field boundaries shown on historic mapping	621161	292036	Circular feature = LiDAR, enclosure = all consulted except LiDAR	Enclosure = c. 59m x 58m, circular feature = c. 40m x 32m	N/A	No	N/A	Site of unmapped post-medieval pond and site of possible unmapped medieval - post-medieval building set within a square enclosure	Medieval - post-medieval	Low
		Field boundaries aligning with those shown on tithe and/or 1st - 2nd edition OS maps			All consulted except LiDAR		N/A	N/A	N/A	Post-medieval field boundaries	Post-medieval	Low
Area 139												
Area 140		Field boundaries and ponds aligning with those shown on tithe and/or 1st - 2nd edition OS maps			All sources consulted	N/A	N/A	N/A	N/A	Post-medieval field boundaries and ponds	Post-medieval	Low
Area 141												
Area 142		Field boundaries aligning with those shown on tithe and/or 1st - 2nd edition OS maps			Historic England Archives, Bing Maps and Google Earth Pro	N/A	N/A	N/A	N/A	Post-medieval field boundaries	Post-medieval	Low
Area 143		Field boundaries aligning with those shown on tithe and/or 1st - 2nd edition OS maps			All sources consulted	N/A	N/A	N/A	N/A	Post-medieval field boundaries	Post-medieval	Low
Area 144		Field boundaries aligning with those shown on tithe and/or 1st - 2nd edition OS maps			All sources consulted	N/A	N/A	N/A	N/A	Post-medieval field boundaries	Post-medieval	Low
Area 145		Field boundaries aligning with those shown on tithe and/or 1st - 2nd edition OS maps			All sources consulted	N/A	N/A	N/A	N/A	Post-medieval field boundaries	Post-medieval	Low
Area 146		Field boundaries aligning with those shown on tithe and/or 1st - 2nd edition OS maps			All sources consulted	N/A	N/A	N/A	N/A	Post-medieval field boundaries	Post-medieval	Low
Area 147	HA 30a	Series of rectilinear enclosures and small circular features within field in which the site of St. Peter's Church is shown on 1st - 2nd edition OS maps	620749	293616	LiDAR and Google Earth Pro	Total of area of c. 260m x 182m	N/A	MNF33332 - Earthworks of medieval to post medieval enclosures	N/A	Deserted or shrunken medieval and/or post-medieval village centred around the site of St. Peter's Church	Medieval - post-medieval	Medium
	HA 30b	Field boundary aligning with that shown on tithe map	620744	293558	Historic England Archives, LiDAR and Google Earth Pro	c. 115m x 8m	N/A		N/A	Post-medieval field boundary	Post-medieval	Low

Area 148	HA 31	Rectangular anomaly in NW corner of field	620839	293607	LiDAR	c. 72m x 45m	N/A	MNF64157 - Roman and Late Saxon to post-medieval finds	N/A	Most likely related to modern agriculture	Modern	Negligible
Area 149												
Area 150												
Area 151		Field boundaries aligning with those shown on tithe and/or 1st - 2nd edition OS maps			LiDAR and Google Earth Pro	N/A	N/A	N/A	N/A	Post-medieval field boundaries	Post-medieval	Low
Area 152		Field boundaries aligning with those shown on tithe and/or 1st - 2nd edition OS maps			Google Earth Pro, Bing Maps and LiDAR	N/A	N/A	N/A	N/A	Post-medieval field boundaries	Post-medieval	Low
Area 153		Field boundaries aligning with those shown on tithe and/or 1st - 2nd edition OS maps			Google Earth Pro	N/A	N/A	N/A	N/A	Post-medieval field boundaries	Post-medieval	Low
Area 154		Field boundaries aligning with those shown on tithe and/or 1st - 2nd edition OS maps			Google Earth Pro	N/A	N/A	N/A	N/A	Post-medieval field boundaries	Post-medieval	Low
Area 155	HA 32	Amorphouse anomalies within area of planting shown on 1st - 2nd OS mapping and to immediate south of brickmarks identified on historic mapping	621171	294118	LiDAR	c. 133m x 100m	N/A	MNF10183 - Post medieval brickworks	N/A	Most likely to be related to the post-medieval planting shown on historic mapping but could be related to the post-medieval brickworks to the immediate north	Post-medieval	Low
		Field boundaries aligning with those shown on tithe and/or 1st - 2nd edition OS maps			LiDAR and Google Earth Pro	N/A	N/A	N/A	N/A	Post-medieval field boundaries	Post-medieval	Low
Area 156												Low
Area 157		Field boundaries aligning with those shown on tithe and/or 1st - 2nd edition OS maps			Historic England Archives and Google Earth Pro	N/A	N/A	N/A	N/A	Post-medieval field boundaries	Post-medieval	Low
Area 158	HA 33	Rectilinear enclosure	621840	293877	Norfolk Air Photo Service	c. 114m x 90m	N/A	MNF10177 - Undated cropmark	N/A	Rectilinear enclosure	Iron Age or Roman	Medium
	HA 34	Two small circular or semicircular features not corresponding to ponds shown on historic mapping	621793	293691	Google Earth Pro and Bing Maps	C. 21m x 10m and c. 20m x 17m	N/A		N/A	Probable unmapped medieval or post-medieval ponds	Post-medieval	Low
		Field boundaries aligning with those shown on tithe and/or 1st - 2nd edition OS maps			Google Earth Pro and Bing Maps	N/A	N/A	N/A	N/A	Post-medieval field boundaries	Post-medieval	Low
Area 159	HA 35	Large circular feature in southern half of field	622033	293880	LiDAR, Google Earth Pro and Bing Maps	c. 60m x 51m	N/A	No	N/A	Possible unmapped medieval or post-medieval extraction pits or ponds	Medieval - post-medieval	Low
		Field boundaries and ponds aligning with those shown on tithe and/or 1st - 2nd edition OS maps			Google Earth Pro and Bing Maps	N/A	N/A	N/A	N/A	Post-medieval field boundaries and ponds	Post-medieval	Low
Area 160	HA 36	Linear and circular feature not corresponding to boundaries or ponds shown on historic mapping	621977	293683	LiDAR and Google Earth Pro	c. 121m x 31m	N/A	N/A	N/A	Probable unmapped medieval or post-medieval field boundary and pond	Post-medieval	Low
Area 161												
Area 162	HA 37	Two circular features	621647	293139	LiDAR and Google Earth Pro	c. 55m x 35m and 60m x 55m	N/A	No	N/A	Possible unmapped medieval or post-medieval extraction pits or ponds	Medieval - post-medieval	Low
		Field boundaries aligning with those shown on tithe and/or 1st - 2nd edition OS maps			Historic England Archives, LiDAR and Google Earth Pro	N/A	N/A	N/A	N/A	Post-medieval field boundaries	Post-medieval	Low
Area 163	HA 38	Depression	623061	294627	LiDAR	c. 54m x 45m	N/A	No	N/A	Possible unmapped medieval or post-medieval extraction pits or ponds	Medieval - post-medieval	Low
		Field boundaries aligning with those shown on tithe and/or 1st - 2nd edition OS maps			Bing Maps	N/A	N/A	N/A	N/A	Post-medieval field boundaries	Post-medieval	Low
Area 164												

Area 165	HA 39	Series of earthworks shown on LiDAR corresponding to series of water features shown on aerial photographs but not historic mapping	622845	294712	LiDAR and Norfolk Air Photo Service	c. 170m x 48.50m	N/A	No	N/A	Possible water management features	Modern	Negligible
		Field boundaries aligning with those shown on tithe and/or 1st - 2nd edition OS maps			Norfolk Air Photo Service	N/A	N/A	N/A	N/A	Post-medieval field boundaries	Post-medieval	Low
Area 166		Field boundaries aligning with those shown on tithe and/or 1st - 2nd edition OS maps			All sources consulted	N/A	N/A	N/A	N/A	Post-medieval field boundaries	Post-medieval	Low
Area 167	HA 40	Possible rectilinear enclosure containing a circular feature	621582	295444	Norfolk Air Photo Service (TM2295/93-358/76)	Total area c. 168m x 146m	N/A	No	N/A	Prehistoric enclosure and associated circular feature	Iron Age or Roman	Medium
		Field boundaries aligning with those shown on tithe and/or 1st - 2nd edition OS maps			All sources consulted	N/A	N/A	N/A	N/A	Post-medieval field boundaries	Post-medieval	Low
Area 168		Field boundaries aligning with those shown on tithe and/or 1st - 2nd edition OS maps			Historic England Archives	N/A	N/A	N/A	N/A	Post-medieval field boundaries	Post-medieval	Low
Area 169		Field boundaries aligning with those shown on tithe and/or 1st - 2nd edition OS maps			Historic England Archives	N/A	N/A	N/A	N/A	Post-medieval field boundaries	Post-medieval	Low
Area 170		Field boundaries aligning with those shown on tithe and/or 1st - 2nd edition OS maps			Historic England Archives	N/A	N/A	N/A	N/A	Post-medieval field boundaries	Post-medieval	Low
Area 171		Field boundaries aligning with those shown on tithe and/or 1st - 2nd edition OS maps			Google Earth Pro and LiDAR	N/A	N/A	N/A	N/A	Post-medieval field boundaries	Post-medieval	Low
Area 172		Field boundaries and ponds aligning with those shown on tithe and/or 1st - 2nd edition OS maps			Historic England Archives, Google Earth Pro and LiDAR	N/A	N/A	N/A	N/A	Post-medieval field boundaries and ponds	Post-medieval	Low
Area 173	HA 41	Unmapped circular feature	625458	295621	Google Earth Pro and Bing Maps		N/A	MNF73369 - Roman brooch	Tithe plot 8 (NW corner of field) named Barn Close - circular feature may be related to this	Unless the field name 'Barn Close' has moved substantially, feature is thought most likely to be and unmapped pond	Medieval - post-medieval	Low
		Field boundaries aligning with those shown on tithe and/or 1st - 2nd edition OS maps			Google Earth Pro and Bing Maps	N/A	N/A	N/A	N/A	Post-medieval field boundaries	Post-medieval	Low
Area 174												
Area 175												
Area 176		Field boundaries aligning with those shown on tithe and/or 1st - 2nd edition OS maps			Historic England Archives, Google Earth Pro and Bing Maps	N/A	N/A	N/A	N/A	Post-medieval field boundaries	Post-medieval	Low
Area 177	VOID											
Area 178	VOID											
Area 179		Field boundaries aligning with those shown on tithe and/or 1st - 2nd edition OS maps			Historic England Archives, Google Earth Pro and Bing Maps	N/A	N/A	N/A	N/A	Post-medieval field boundaries	Post-medieval	Low
Area 180		Field boundaries aligning with those shown on tithe and/or 1st - 2nd edition OS maps			Historic England Archives	N/A	N/A	N/A	N/A	Post-medieval field boundaries	Post-medieval	Low
Area 181		Field boundaries aligning with those shown on tithe and/or 1st - 2nd edition OS maps			Historic England Archives, Google Earth Pro and Bing Maps	N/A	N/A	N/A	N/A	Post-medieval field boundaries	Post-medieval	Low
Area 182		Field boundaries aligning with those shown on tithe and/or 1st - 2nd edition OS maps			Historic England Archives, Google Earth Pro and Bing Maps	N/A	N/A	N/A	N/A	Post-medieval field boundaries	Post-medieval	Low
Area 183		Field boundaries aligning with those shown on tithe and/or 1st - 2nd edition OS maps			Historic England Archives, Google Earth Pro and Bing Maps	N/A	N/A	N/A	N/A	Post-medieval field boundaries	Post-medieval	Low

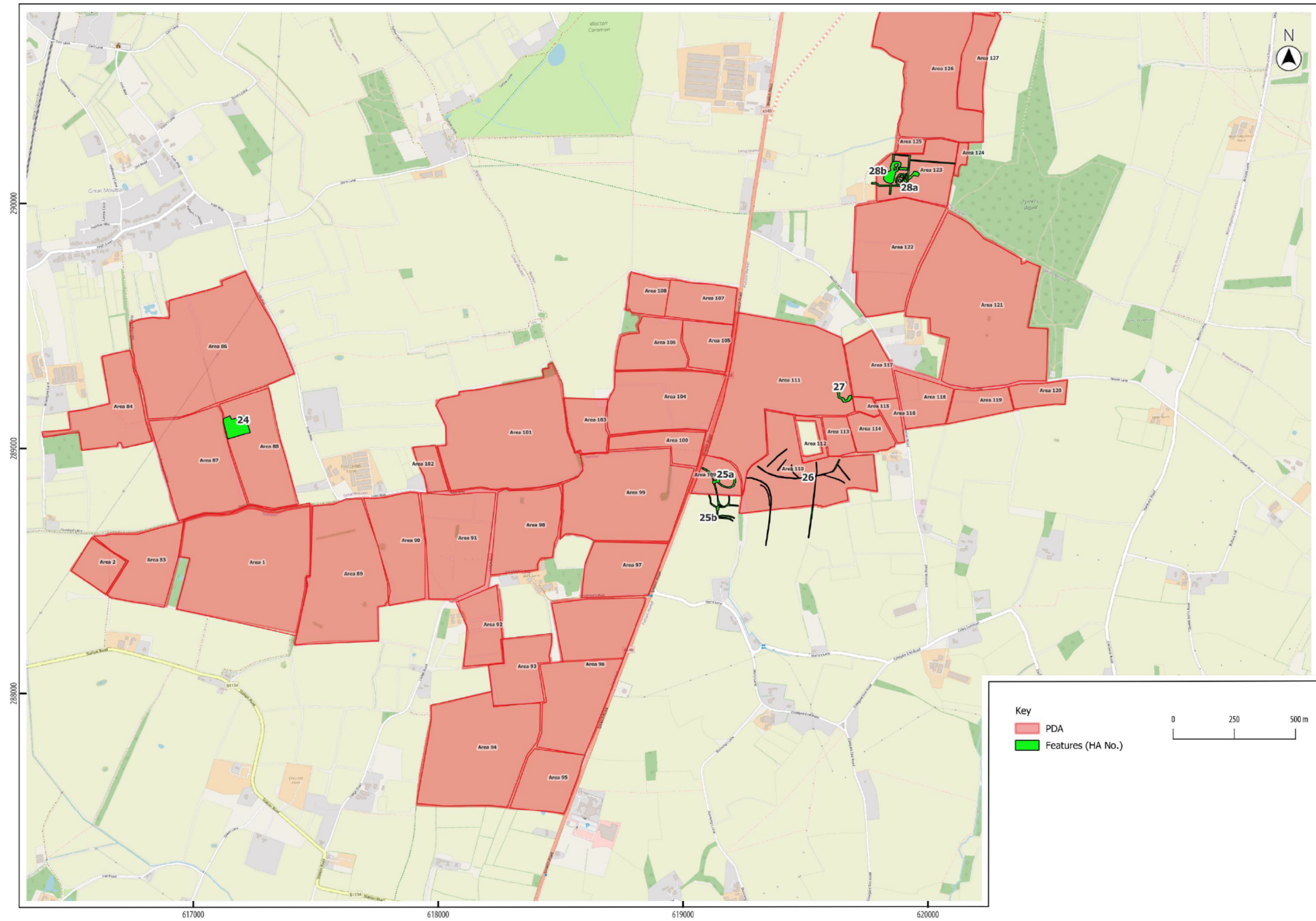
Area 184		Field boundaries and ponds aligning with those shown on tithe and/or 1st - 2nd edition OS maps			Historic England Archives and LiDAR	N/A	N/A	N/A	N/A	Post-medieval field boundaries and ponds	Post-medieval	Low
Area 185												
Area 186												
Area 187	HA 42	Circular feature on SW corner of field	626780	297426	LiDAR	c. 38m x 34m	N/A	N/A	N/A	Possible unmapped medieval or post-medieval extraction pit or pond	Medieval - post-medieval	Low
		Field boundaries and ponds aligning with those shown on tithe and/or 1st - 2nd edition OS maps			All sources consulted	N/A	N/A	N/A	N/A	Post-medieval field boundaries and ponds	Post-medieval	Low
Area 188		Field boundaries aligning with those shown on tithe and/or 1st - 2nd edition OS maps			Historic England Archives and Google Earth Pro	N/A	N/A	N/A	N/A	Post-medieval field boundaries	Post-medieval	Low
Area 189		Field boundaries aligning with those shown on tithe and/or 1st - 2nd edition OS maps			Google Earth Pro	N/A	N/A	N/A	N/A	Post-medieval field boundaries	Post-medieval	Low
Area 190		Field boundaries aligning with those shown on tithe and/or 1st - 2nd edition OS maps			Google Earth Pro	N/A	N/A	N/A	N/A	Post-medieval field boundaries	Post-medieval	Low
Area 191		Field boundaries aligning with those shown on tithe and/or 1st - 2nd edition OS maps			Google Earth Pro and Bing Maps	N/A	N/A	N/A	N/A	Post-medieval field boundaries	Post-medieval	Low
Area 192												
Area 193		Field boundaries aligning with those shown on tithe and/or 1st - 2nd edition OS maps			Google Earth Pro and Bing Maps	N/A	N/A	N/A	N/A	Post-medieval field boundaries	Post-medieval	Low
Area 194												
Area 195		Field boundaries aligning with those shown on tithe and/or 1st - 2nd edition OS maps			Google Earth Pro and Bing Maps	N/A	N/A	N/A	N/A	Post-medieval field boundaries	Post-medieval	Low
Area 196												
Area 197	HA 43	Ovoid feature in NE corner of field next to road	629473	295986	All except Bing Maps	c. 83m x 50m	N/A	MNF66485 - Medieval coins	Tithe plot 309: Pale Close	Possible site of medieval building. Field name 'Pale Close' suggests there was a deer park in the vicinity - was the building related to this?	Medieval	Medium
		Field boundaries aligning with those shown on tithe and/or 1st - 2nd edition OS maps			LiDAR and Google Earth Pro	N/A	N/A	N/A	N/A	Post-medieval field boundaries	Post-medieval	Low
Area 198												
Area 199	HA 44	Two interconnected rectilinear enclosures in south of field respecting post-medieval field boundaries but not shown on historic mapping	628852	295576	All except LiDAR	Total area of c. 145m x 70m	N/A	No	N/A	Probable medieval or post-medieval field boundaries	Medieval - post-medieval	Low
		Field boundaries aligning with those shown on tithe and/or 1st - 2nd edition OS maps			All except LiDAR	N/A	N/A	N/A	N/A	Post-medieval field boundaries	Post-medieval	Low
Area 200												
Area 201	HA 45	Linear and curvilinear feature respecting post-medieval field boundaries but not shown on historic mapping	628491	295546	Norfolk Air Photo Service	c. 115m - 145m x 5m	N/A	N/A	N/A	Probable medieval or post-medieval field boundaries	Medieval - post-medieval	Low
		Field boundaries and ponds aligning with those shown on tithe and/or 1st - 2nd edition OS maps			All except LiDAR	N/A	N/A	N/A	N/A	Post-medieval field boundaries and ponds	Post-medieval	Low
Area 202												

Area 203	HA 46	Series of small enclosures, circular features and curvilinear features to the north of post-medieval Woodton Hall and immediate west of possible site of medieval Woodton Hall	628419	295144	All consulted except LiDAR	c. 430 x 280m	N/A	MNF10156 - Late Saxon to post-medieval finds; MNF74763 - Possible site of Woodton Hall (pre 1694) or the Hermitage Garden	Tithe Plot 326 = The Gibbett; Tithe Plot 325 = Pound Close	Deserted medieval village	Medieval	Medium
Area 204		Field boundaries and ponds aligning with those shown on tithe and/or 1st - 2nd edition OS maps			LiDAR, Google Earth Pro and Bing Maps	N/A	N/A	N/A	N/A	Post-medieval field boundaries and ponds	Post-medieval	Low
Area 205		Field boundaries aligning with those shown on tithe and/or 1st - 2nd edition OS maps			Historic England Archives, Google Earth Pro and Bing Maps	N/A	N/A	N/A	N/A	Post-medieval field boundaries	Post-medieval	Low
Area 206	HA 62	Curvilinear incorporating two ditches mirrored by historic mapping; at least one possible associated circular feature present	627603	294847	Historic England Archives	Total area of c. 103m x c. 66m	N/A	MNF29782 - Soilmarks of possible medieval moat	N/A	Possible medieval moat	Medieval	Medium
Area 207												
Area 208		Field boundaries aligning with those shown on tithe and/or 1st - 2nd edition OS maps			Historic England Archives, Google Earth Pro and LiDAR	N/A	N/A	N/A	N/A	Post-medieval field boundaries	Post-medieval	Low
Area 209	HA 47	Two interconnected circular features not shown on historic mapping	627124	294653	All sources consulted	c. 50m x 28m	N/A	N/A	N/A	Probable unmapped post-medieval or modern ponds	Post-medieval - modern	Low
		Field boundary aligning with that shown on tithe map			All sources consulted							
Area 210		Field boundaries aligning with those shown on tithe and/or 1st - 2nd edition OS maps			Historic England Archives	N/A	N/A	N/A	N/A	Post-medieval field boundaries	Post-medieval	Low
Area 211		Field boundaries aligning with those shown on tithe and/or 1st - 2nd edition OS maps			Google Earth Pro and Bing Maps	N/A	N/A	N/A	N/A	Post-medieval field boundaries	Post-medieval	Low
Area 212		Field boundaries aligning with those shown on tithe and/or 1st - 2nd edition OS maps			Google Earth Pro and Bing Maps	N/A	N/A	N/A	N/A	Post-medieval field boundaries	Post-medieval	Low
Area 213												
Area 214												
Area 215		N-S linears not shown on mapping			Google Earth Pro and Bing Maps	N/A	N/A	N/A	N/A	Land drains	Modern	Negligible
Area 216		Field boundaries aligning with those shown on tithe and/or 1st - 2nd edition OS maps			Historic England Archives	N/A	N/A	N/A	N/A	Post-medieval field boundaries	Post-medieval	Low
Area 217		VOID										
Area 218												
Area 219												
Area 220		N-S linears not shown on mapping			Google Earth Pro and Bing Maps	N/A	N/A	N/A	N/A	Land drains	Modern	Negligible
Area 221		N-S linears not shown on mapping			Google Earth Pro and Bing Maps	N/A	N/A	N/A	N/A	Land drains	Modern	Negligible
Area 222		Field boundaries aligning with those shown on tithe and/or 1st - 2nd edition OS maps			Norfolk Air Photo Service	N/A	N/A	N/A	N/A	Post-medieval field boundaries	Post-medieval	Low
Area 223												
Area 224		Field boundaries aligning with those shown on tithe and/or 1st - 2nd edition OS maps			Norfolk Air Photo Service	N/A	N/A	N/A	N/A	Post-medieval field boundaries	Post-medieval	Low
Area 225	HA 48	Anomaly corresponding with site of building shown on 1st - 2nd edition OS maps	625661	294281	Historic England Archives and LiDAR	c. 55m x 35m	N/A	N/A	N/A	Site of post-medieval building	Post-medieval	Medium
	HA 49	Circular feature in approximate centre of field not corresponding to the sites of post-medieval ponds as shown on historic mapping	625728	294524	LiDAR	c. 35m x 34m	N/A	N/A	N/A	Possible unmapped medieval or post-medieval extraction pit or pond	Post-medieval	Low

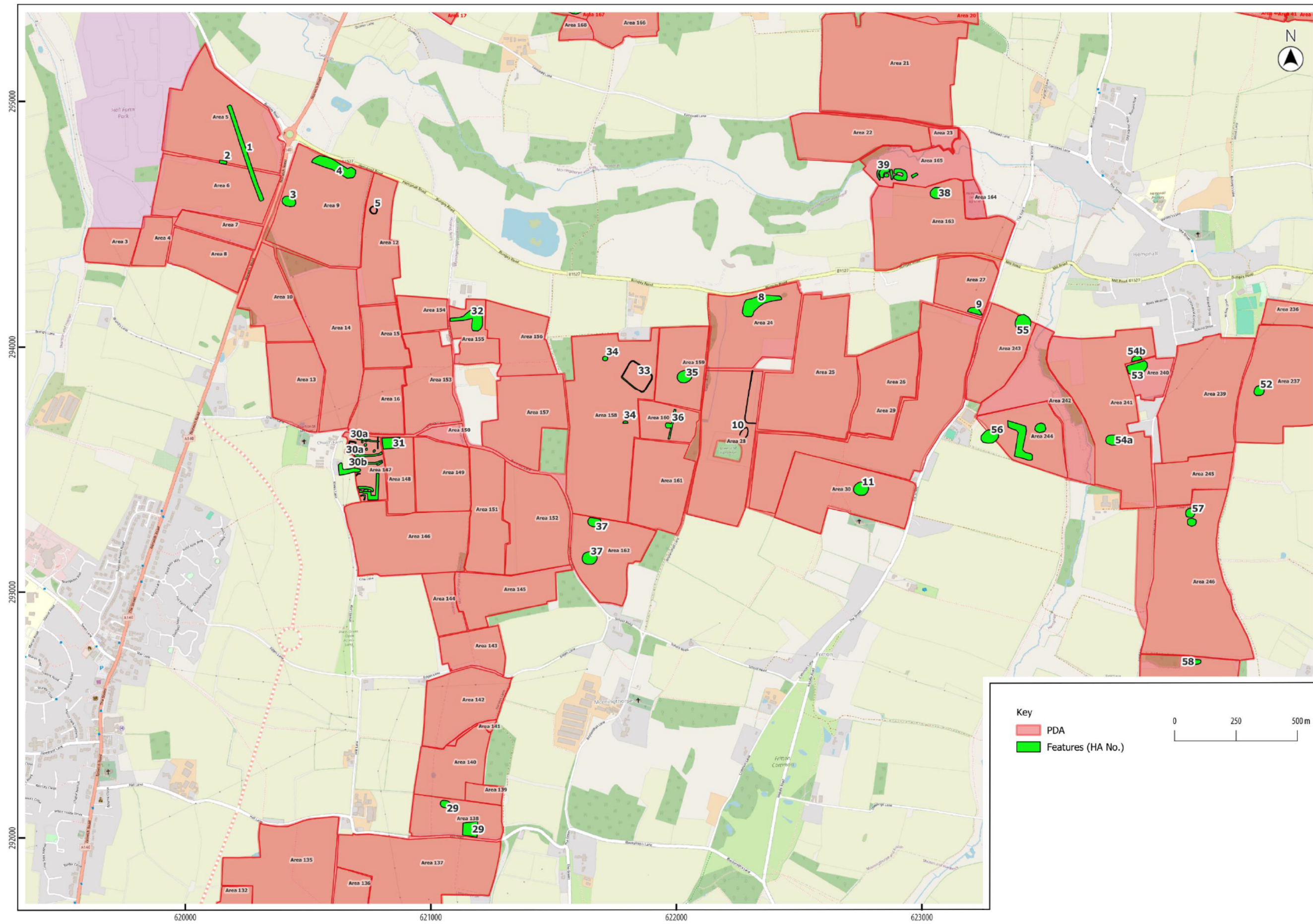
		Field boundaries and ponds aligning with those shown on tithe and/or 1st - 2nd edition OS maps			All sources consulted	N/A	N/A	N/A	N/A	Post-medieval field boundaries and ponds	Post-medieval	Low
Area 226		Field boundaries aligning with those shown on tithe and/or 1st - 2nd edition OS maps			Historic England Archives and Bing Maps	N/A	N/A	N/A	N/A	Post-medieval field boundaries	Post-medieval	Low
Area 227												
Area 228	HA 50a	Northernmost of two circular features in centre of field which corresponds with HER entry for a possible ring ditch	625256	294535	All sources consulted	c. 58m x 52m	N/A	MNF56912 - cropmark of possible ring ditch	N/A	Nothern feature = possible ring ditch corresponding to HER entry;	Neolithic - Bronze Age	Medium
	HA 50b	Southernmost of two circular features in centre of field not shown on historic mapping	625255	294479	All sources consulted	c. 57m x 32m	N/A	No	N/A	Probable unmapped medieval - post-medieval pond or extraction pit	Medieval - post-medieval	Low
		Field boundaries aligning with those shown on tithe and/or 1st - 2nd edition OS maps			All sources consulted	N/A	N/A	N/A	N/A	Post-medieval field boundaries	Post-medieval	Low
Area 229												
Area 230		Field boundaries aligning with those shown on tithe and/or 1st - 2nd edition OS maps			Historic England Archives and Google Earth Pro	N/A	N/A	N/A	N/A	Post-medieval field boundaries	Post-medieval	Low
Area 231		Field boundaries aligning with those shown on tithe and/or 1st - 2nd edition OS maps			Historic England Archives	N/A	N/A	N/A	N/A	Post-medieval field boundaries	Post-medieval	Low
Area 232		Field boundaries aligning with those shown on tithe and/or 1st - 2nd edition OS maps			Historic England Archives, Google Earth Pro and Bing Maps	N/A	N/A	N/A	N/A	Post-medieval field boundaries	Post-medieval	Low
Area 233	HA 51	Ovoid anomaly at NW corner seemingly respecting post-medieval field boundaries	625027	294433	LiDAR, Google Earth Pro and Bing Maps	c. 44m x 30m	N/A	No	N/A	Unknown - possibilities include prehistoric burial (due to shape), the remains of an unmapped medieval - post-medieval building (due to shape and location) or modern agriculture	Unknown	Unknown
		Field boundaries aligning with those shown on tithe and/or 1st - 2nd edition OS maps			Historic England Archives, Google Earth Pro and Bing Maps	N/A	N/A	N/A	N/A	Post-medieval field boundaries	Post-medieval	Low
Area 234		Field boundaries aligning with those shown on tithe and/or 1st - 2nd edition OS maps			Historic England Archives	N/A	N/A	N/A	N/A	Post-medieval field boundaries	Post-medieval	Low
Area 235		Field boundaries aligning with those shown on tithe and/or 1st - 2nd edition OS maps			Historic England Archives, Google Earth Pro and Bing Maps	N/A	N/A	N/A	N/A	Post-medieval field boundaries	Post-medieval	Low
Area 236		Field boundaries aligning with those shown on tithe and/or 1st - 2nd edition OS maps			Historic England Archives and Google Earth Pro	N/A	N/A	N/A	N/A	Post-medieval field boundaries	Post-medieval	Low
Area 237	HA 52	Two small circular features which appear to span across post-medieval field boundaries shown on historic mapping	624374	293821	LiDAR	c. 40m x 38m and 28m x 25m	N/A	No	N/A	Probable unmapped medieval - post-medieval ponds	Medieval - post-medieval	Low
		Field boundaries and ponds aligning with those shown on tithe and/or 1st - 2nd edition OS maps			Historic England Archives, Google Earth Pro and Bing Maps	N/A	N/A	N/A	N/A	Post-medieval field boundaries and ponds	Post-medieval	Low
Area 238		Field boundaries aligning with those shown on tithe and/or 1st - 2nd edition OS maps			Historic England Archives	N/A	N/A	N/A	N/A	Post-medieval field boundaries	Post-medieval	Low
Area 239		Field boundaries aligning with those shown on tithe and/or 1st - 2nd edition OS maps			Historic England Archives	N/A	N/A	N/A	N/A	Post-medieval field boundaries	Post-medieval	Low
Area 240	HA 53	Large subcircular feature in NW corner of field	623878	293915	All sources consulted	c. 84m x 45m	N/A	MNF22241 - Multi period finds	Tithe Plot 376 = Gravel Pit Close	Medieval - post-medieval gravel pit	Medieval - post-medieval	Low

Area 241	HA 54a	One subcircular feature in south which does not respects post-medieval field boundaries	623781	293619	All sources consulted	c. 62m x 43m	N/A	MNF19363 - Multi period finds	Tithe Plot 388 = Saw Pit Close; Tithe Plot 390 = Clay Pit Close	Probable medieval - post-medieval saw or clay pit	Medieval - post-medieval	Low
	HA 54b	One semi-circular feature in north which respects post-medieval field boundaries	623874	293953	All sources consulted	c. 44m x 19m	N/A			Probable unmapped medieval - post-medieval pond		
		Field boundaries aligning with those shown on tithe and/or 1st - 2nd edition OS maps			Google Earth Pro	N/A	N/A	N/A	N/A	Post-medieval field boundaries	Post-medieval	Low
Area 242												
Area 243	HA 55	Large depression in NE corner	623412	294099	All sources consulted	c. 72m x 65m	N/A	MNF29412 - Possible Late Neolithic/Bronze Age flint working site and multi-period finds	N/A	Likely extraction site possibly relating to HER entry, although may be of any date	Neolithic - Bronze Age	Medium
		Field boundaries aligning with those shown on tithe and/or 1st - 2nd edition OS maps			Historic England Archives and Norfolk Air Photo Service	N/A	N/A	N/A	N/A	Post-medieval field boundaries	Post-medieval	Low
Area 244	HA 56	Several circular or amorphous features	623277	293634	Historic England Archives, LiDAR and Norfolk Air Photo Service	Total area = c. 255m x 157m	N/A	No	Tithe Plot 44 = Brick Kiln Close; Tithe Plot 61 = Clay Pit Close	Site of medieval - post-medieval brick works	Medieval - post-medieval	Low
		Field boundaries aligning with those shown on tithe and/or 1st - 2nd edition OS maps			Norfolk Air Photo Service, Google Earth Pro and Bing Maps	N/A	N/A	N/A	N/A	Post-medieval field boundaries	Post-medieval	Low
Area 245		Field boundaries aligning with those shown on tithe and/or 1st - 2nd edition OS maps			LiDAR and Google Earth Pro	N/A	N/A	N/A	N/A	Post-medieval field boundaries	Post-medieval	Low
Area 246	HA 57	Two circular features near northern edge of the field not corresponding with ponds shown on historic mapping	624094	293323	LiDAR and Google Earth Pro	c. 38m x 37m and 35m x 32m	N/A	No	N/A	Probable unmapped medieval - post-medieval ponds	Medieval - post-medieval	Low
		Field boundaries aligning with those shown on tithe and/or 1st - 2nd edition OS maps			Google Earth Pro	N/A	N/A	N/A	N/A	Post-medieval field boundaries	Post-medieval	Low
Area 247	HA 58	Several circular or amorphous features; field shown as containing at least 3 now lost buildings on tithe map	624115	292717	LiDAR, Bing Maps and Google Earth Pro	Total area = c. 215m x 200m	N/A	MNF21990 - Medieval and post medieval pottery finds	N/A	Shrunken medieval - post-medieval village of Lundy Green: remains of post-medieval houses, gardens and associated features as shown on historic mapping	Medieval - post-medieval	Medium
Area 248	HA 59	Two circular features not shown on historic mapping	624272	292179	Google Earth Pro	c. 25m x 21.5m and c. 24m x 29m	N/A	N/A	N/A	Possible unmapped medieval - post-medieval ponds	Medieval - post-medieval	Low
		Field boundaries aligning with those shown on tithe and/or 1st - 2nd edition OS maps			Google Earth Pro	N/A	N/A	N/A	N/A	Post-medieval field boundaries	Post-medieval	Low
Area 249	HA 60	Circular feature not shown on historic mapping	624033	292231	Google Earth Pro	c. 35m x 33m	N/A	N/A	N/A	Possible unmapped medieval - post-medieval ponds	Medieval - post-medieval	Low
		Field boundaries aligning with those shown on tithe and/or 1st - 2nd edition OS maps			Google Earth Pro	N/A	N/A	N/A	N/A	Post-medieval field boundaries	Post-medieval	Low
Area 250		Field boundaries aligning with those shown on tithe and/or 1st - 2nd edition OS maps			Google Earth Pro	N/A	N/A	N/A	N/A	Post-medieval field boundaries	Post-medieval	Low
Area 251	HA 17	Military airfield	624857	291045	Historic England Archive and Norfolk Air Photo Service	c.1.9km x 1.1km	No	MNF21992 - Hardwick WW2 USAAF airfield		Military airfield	Modern	Medium
		Field boundaries aligning with those shown on tithe and/or 1st - 2nd edition OS maps			Google Earth Pro	N/A	N/A	N/A	N/A	Post-medieval field boundaries	Post-medieval	Low
Area 252		Field boundaries aligning with those shown on tithe and/or 1st - 2nd edition OS maps			Google Earth Pro	N/A	N/A	N/A	N/A	Post-medieval field boundaries	Post-medieval	Low

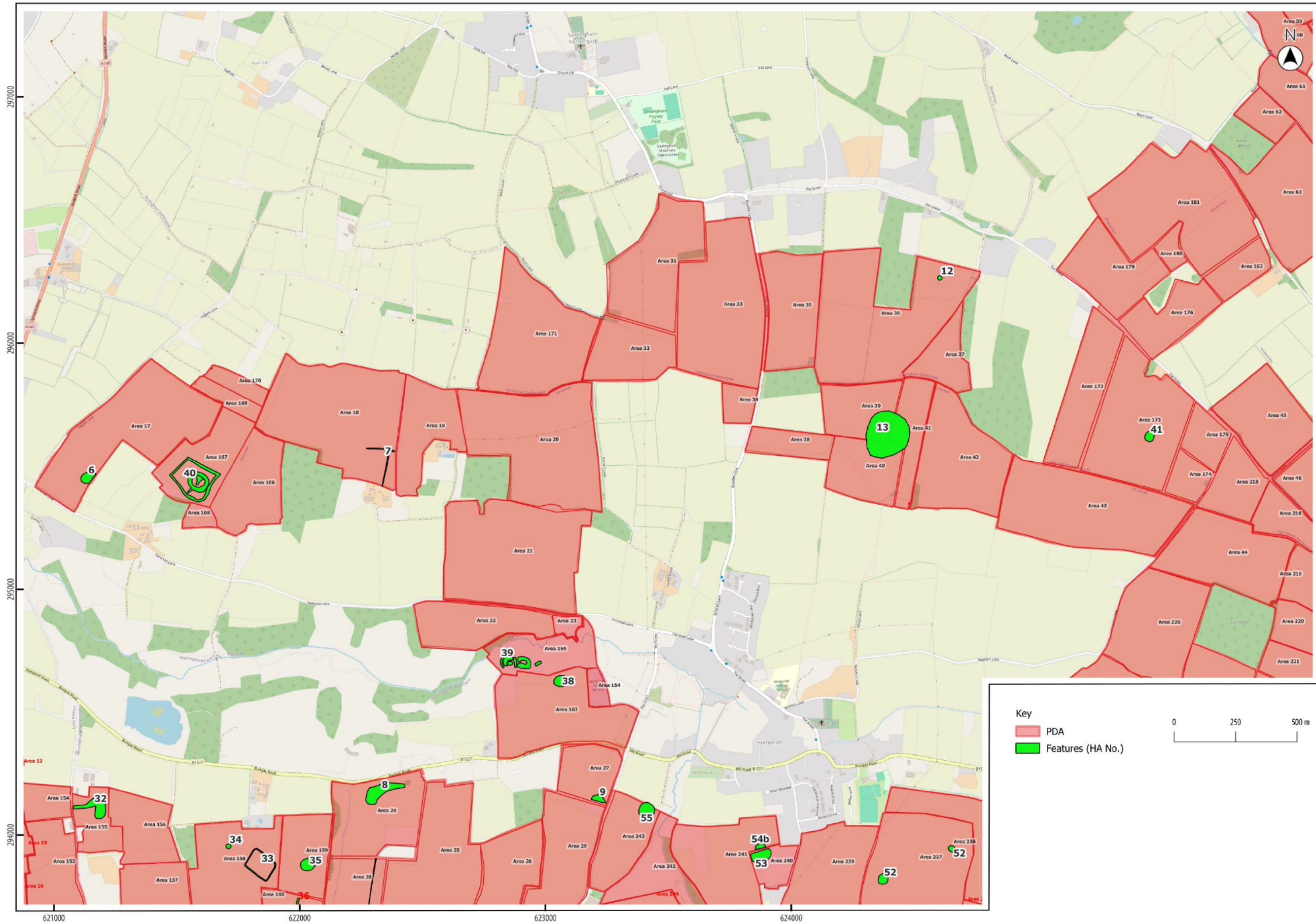
Appendix 2: Location of identified cropmarks, soilmarks, earthworks and standing structures



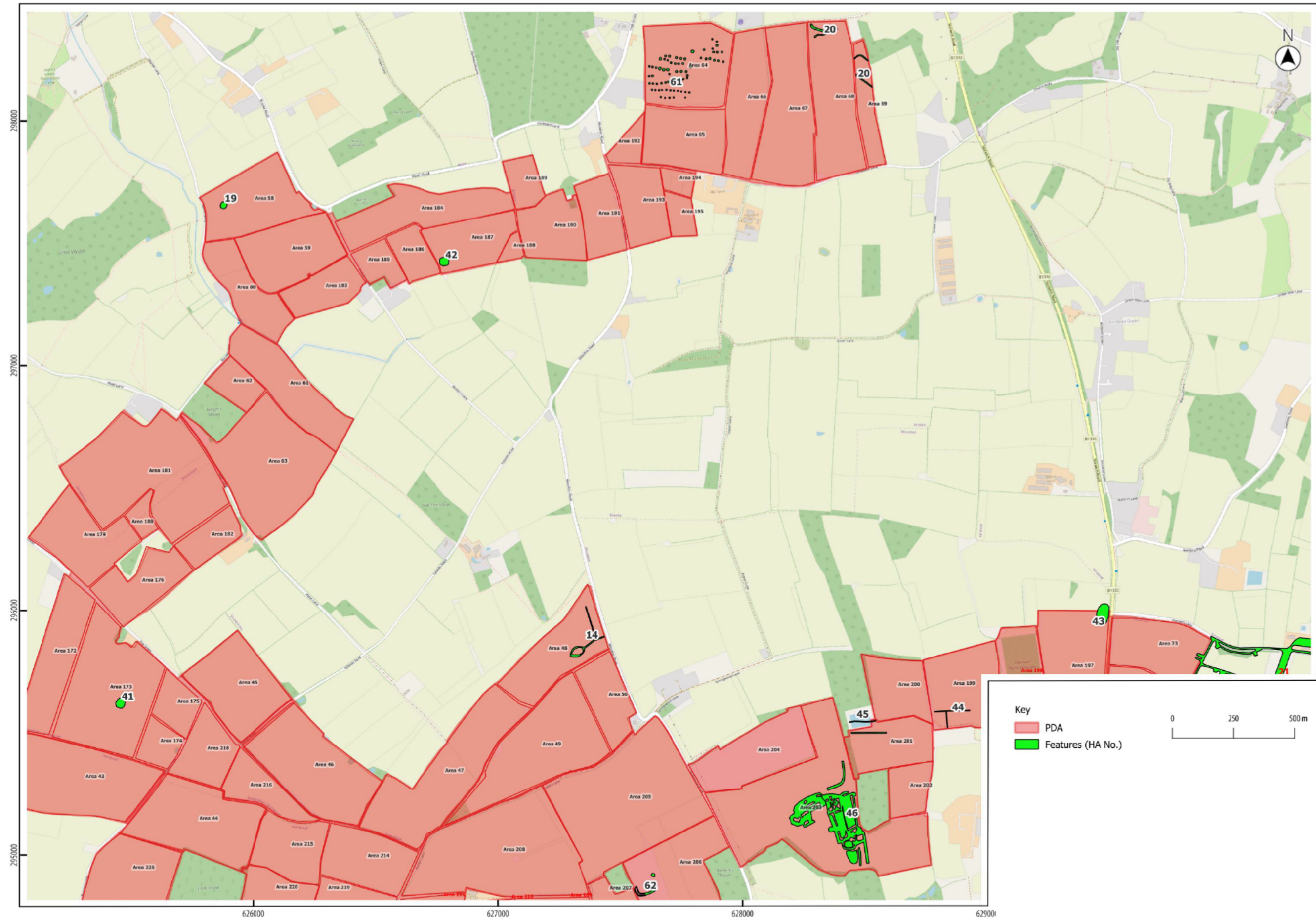
Illus 88. Location of features 24 - 28



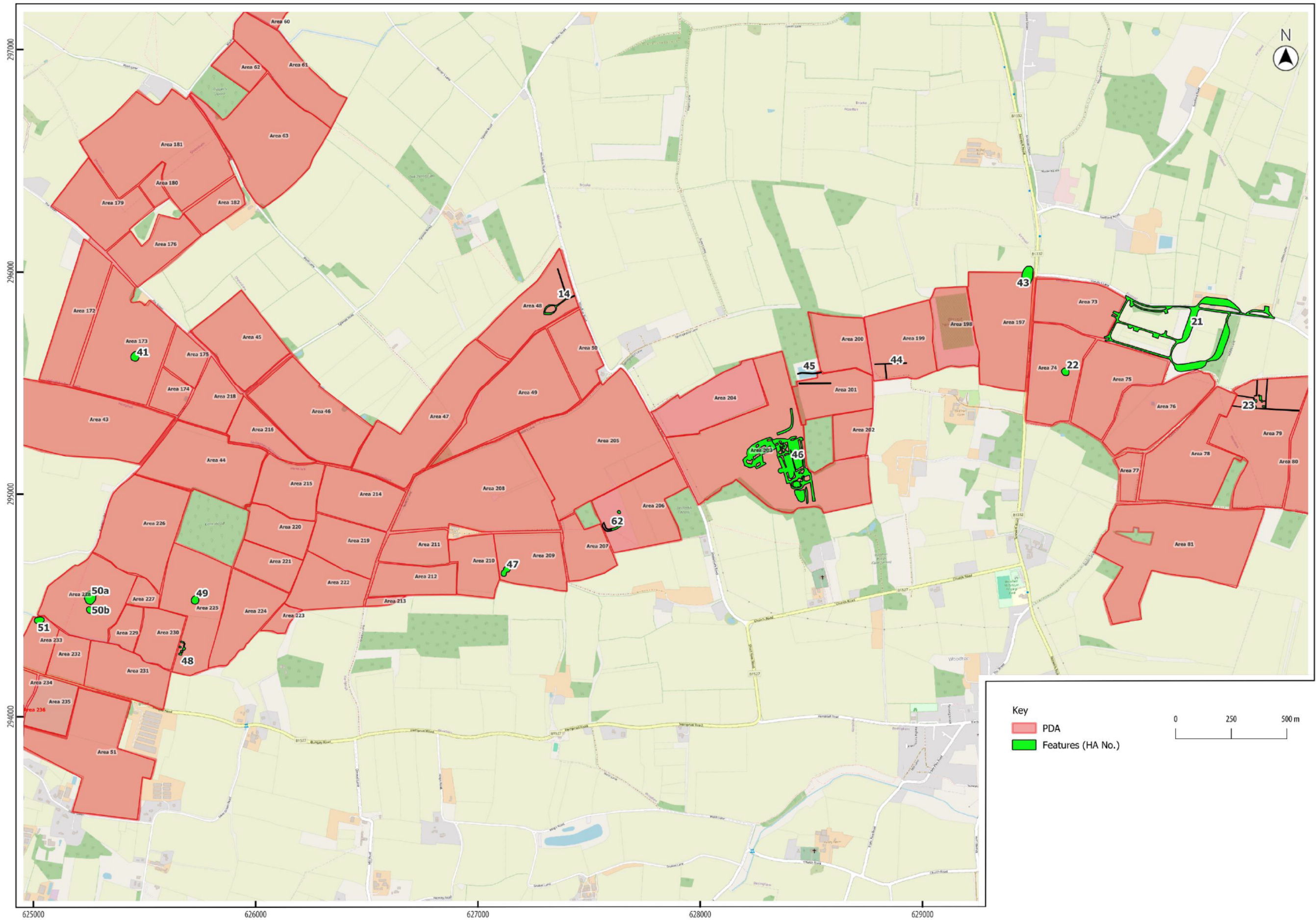
Illus 89. Location of features 1 – 5, 9-11, 29 – 39 and 52 - 58



Illus 90. Location of features 6 - 9, 12, 13, 32 - 35, 38 - 41 and 52 - 58



Illus 91. Location of features 14, 19, 20, 41, 43 – 45, 46, 61 and 62



Illus 92. Location of features 21 – 23, 41, 43 – 51 and 62



© 2024 by Headland Archaeology (UK) Ltd

Headland Archaeology Scotland
13 Jane Street
Edinburgh EH6 5HE
t 0131 467 7705
e scotland@headlandarchaeology.com

Headland Archaeology Yorkshire & North
Units 23–25 & 15 | Acorn Business Centre | Balme
Road Cleckheaton BD19 4EZ
t 0127 493 8019
e
yorkshireandnorth@headlandarchaeology.com

Headland Archaeology South & East
Building 68C | Wrest Park | Silsoe
Bedfordshire MK45 4HS
t 01525 861 578
e
southandeast@headlandarchaeology.com

Headland Archaeology Midlands & West
Unit 1 | Clearview Court | Twyford Rd
Hereford HR2 6JR
t 01432 364 901
e
midlandsandwest@headlandarchaeology.com

Headland Archaeology North West
Fourways House | 57 Hilton Street
Manchester M1 2EJ
t 0161 236 2757
e northwest@headlandarchaeology.com

www.headlandarchaeology.com